

TARA Wall mounted three-way diverter - Brushed Dark Platinum

TARA

36 210 892 Product version from 4/1/2022



- Manual diverter
- Flange 2-3/8"
- with integrated shut-off
(ADA)
Does not allow for simultaneous use of functions
(ADA)
Does not allow for simultaneous use of functions

	Brushed Dark Platinum	36 210 892-99 0010
	Chrome	36 210 892-00 0010
	Brushed Platinum	36 210 892-06 0010
	Platinum	36 210 892-08 0010
	Brushed Durabronze (23kt Gold)	36 210 892-28 0010
	Matte Black	36 210 892-33 0010
	Brushed Dark Brass	36 210 892-39 0010
	Brushed Bronze	36 210 892-42 0010
	Brushed Champagne (22kt Gold)	36 210 892-46 0010
	Champagne (22kt Gold)	36 210 892-47 0010
	Brushed Chrome	36 210 892-93 0010

Required article



- Wall mounted three-way diverter - 35 203 970-90 0010**
- Max. rough in depth 6-1/4"
 - Min. rough in depth 3-3/8"

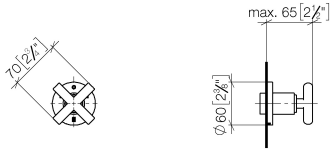


TARA Wall mounted three-way diverter - Brushed Dark Platinum

TARA

36 210 892 Product version from 4/1/2022

mm [inches]

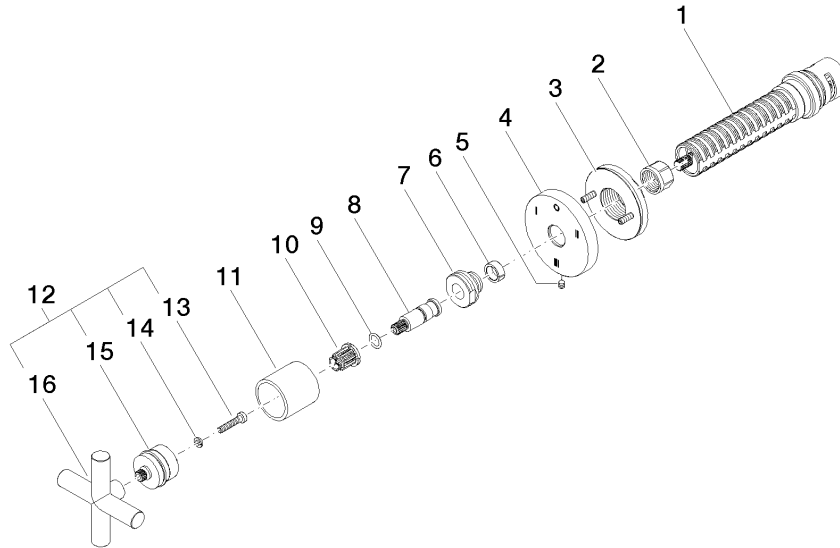


Codes & Standards

ADA	ASME A112.18.1	California Energy Commission (CEC)	cUPC
-----	----------------	------------------------------------	------

Certificates and sustainability

IAPMO_4976 (



Spare parts list

Number	Item Number	Designation	Number of units	Lead time
7	09 24 05 002 90	nipple	1.00	2
5	09 31 11 294 90	pin	1.00	2
3	90 21 02 181 00 90	disc	1.00	2
8	09 29 06 022 90	spindle	1.00	2
4	09 27 89 119-99	rosette	1.00	60
16	09 20 89 010-99	handle	1.00	60
15	90 12 12 219 00-99	base	1.00	20
11	09 21 02 144-99	sleeve	1.00	20
1	90 90 03 305 10 90	diverter	1.00	2
10	90 12 12 002 00 90	fixing cap	1.00	2
13	90 30 30 075 00 90	screw	1.00	2
12	90 20 89 010 10-99	handle	1.00	20
6	90 14 15 020 03 90	ring	1.00	2
2	90 23 30 023 00 90	nut	1.00	2
9	90 14 10 060 00 90	seal	1.00	2
14	90 30 11 029 00 90	disc	1.00	2