

## SYMETRICS Wall mounted three-way diverter - Chrome

36 210 980 Product version from 4/1/2022



- Manual diverter
- Flange 2-3/8" x 2-3/8"
- with integrated shut-off

**(ADA)**

**Does not allow for simultaneous use of functions**

(ADA)

Does not allow for simultaneous use of functions

	Chrome	36 210 980-00 0010
	Brushed Platinum	36 210 980-06 0010
	Brushed Light Gold	36 210 980-27 0010
	Brushed Durabrass (23kt Gold)	36 210 980-28 0010
	Brushed Durabrass (23kt Gold)	36 210 980-33 0010
	Brushed Durabrass (23kt Gold)	36 210 980-93 0010
	Brushed Champagne (22kt Gold)	36 210 980-46 0010
	Champagne (22kt Gold)	36 210 980-47 0010
	Brushed Dark Platinum	36 210 980-99 0010

### Required article



**Wall mounted three-way diverter -** 35 203 970-90  
0010

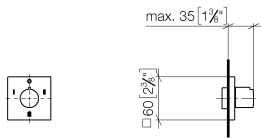
- Max. rough in depth "
- Min. rough in depth "



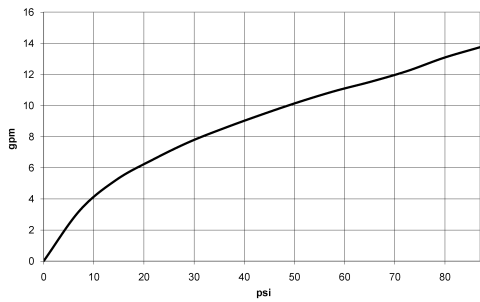
# SYMETRICS Wall mounted three-way diverter - Chrome

36 210 980    Product version from 4/1/2022

mm [inches]



## Flow rate chart



## Codes & Standards

ASME A112.18.1	California Energy Commission (CEC)	cUPC
----------------	------------------------------------	------



## SYMETRICS Wall mounted three-way diverter - Chrome

---

36 210 980 Product version from 4/1/2022

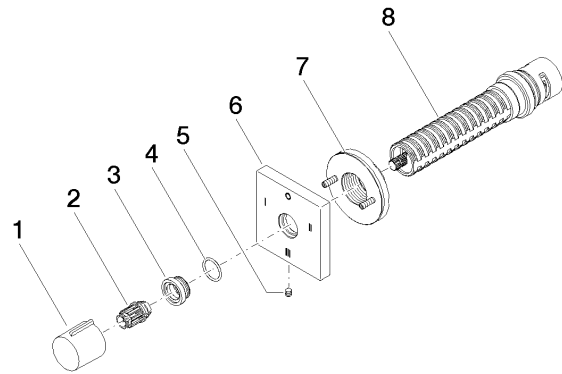
### Certificates

---

IAPMO\_4976 (

# SYMETRICS Wall mounted three-way diverter - Chrome

36 210 980    Product version from 4/1/2022



## Spare parts list

Number	Item Number	Designation	Number of units	Lead time
1	09 20 98 001-00	handle	1	10
2	09 12 12 005 90	fixing cap	1	2
3	09 12 12 043-00	base	1	10
4	09 14 10 017 90	seal	1	2
5	09 31 11 294 90	pin	1	2
6	09 27 98 040-00	rosette	1	60
7	90 21 02 181 00 90	disc	1	2
8	90 90 03 305 10 90	diverter	1	2