



SYMETRICS Wall mounted three-way diverter - Brushed Light Gold



36 210 980 Product version from 4/1/2022



- Manual diverter
- Flange 2-3/8" x 2-3/8"
- with integrated shut-off

(ADA)

Does not allow for simultaneous use of functions

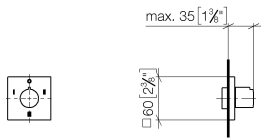
| | | |
|--|-------------------------------|--------------------|
|  | Brushed Light Gold | 36 210 980-27 0010 |
|  | Chrome | 36 210 980-00 0010 |
|  | Brushed Platinum | 36 210 980-06 0010 |
|  | Brushed Durabrass (23kt Gold) | 36 210 980-28 0010 |
|  | Brushed Durabrass (23kt Gold) | 36 210 980-33 0010 |
|  | Brushed Durabrass (23kt Gold) | 36 210 980-93 0010 |
|  | Brushed Champagne (22kt Gold) | 36 210 980-46 0010 |
|  | Champagne (22kt Gold) | 36 210 980-47 0010 |
|  | Brushed Dark Platinum | 36 210 980-99 0010 |



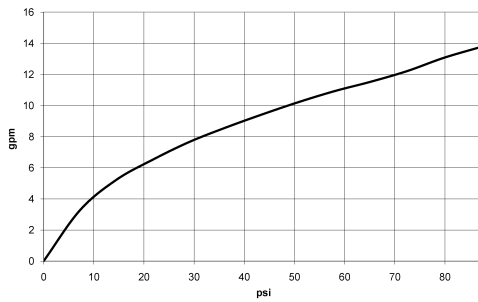
SYMETRICS Wall mounted three-way diverter - Brushed Light Gold

36 210 980 Product version from 4/1/2022

mm [inches]



Flow rate chart



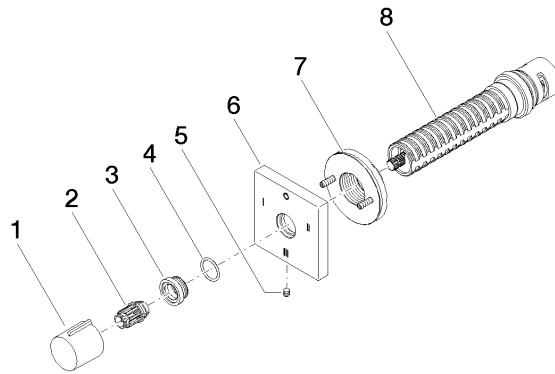
Codes & Standards

California Energy
Commission
(CEC)

SYMETRICS Wall mounted three-way diverter - Brushed Light Gold

36 210 980 Product version from 4/1/2022

Parts for other
finishes can be found
here: [Chrome](#)



Spare parts list

| Number | Item Number | Designation | Number of units | Lead time |
|--------|--------------------|-------------|-----------------|-----------|
| 1 | 09 20 98 001-27 | handle | 1 | 60 |
| 2 | 09 12 12 005 90 | fixing cap | 1 | 2 |
| 3 | 09 12 12 043-27 | base | 1 | 60 |
| 4 | 09 14 10 017 90 | seal | 1 | 2 |
| 5 | 09 31 11 294 90 | pin | 1 | 2 |
| 6 | 09 27 98 040-27 | rosette | 1 | 60 |
| 7 | 90 21 02 181 00 90 | disc | 1 | 2 |
| 8 | 90 90 03 305 10 90 | diverter | 1 | 2 |