

## SYMETRICS Wall mounted three-way diverter - Brushed Platinum

SYMETRICS

36 210 985 Product version from 4/1/2022



- Manual diverter
- Flange 2-3/8" x 2-3/8"
- with integrated shut-off

(ADA)

**Does not allow for simultaneous use of functions**

(ADA)

Does not allow for simultaneous use of functions

	Brushed Platinum	36 210 985-06 0010
	Chrome	36 210 985-00 0010
	Brushed Light Gold	36 210 985-27 0010
	Brushed Durabrass (23kt Gold)	36 210 985-28 0010
	Matte Black	36 210 985-33 0010
	Brushed Champagne (22kt Gold)	36 210 985-46 0010
	Champagne (22kt Gold)	36 210 985-47 0010
	Brushed Chrome	36 210 985-93 0010
	Brushed Dark Platinum	36 210 985-99 0010

### Required article



- Wall mounted three-way diverter -** 35 203 970-90  
 •Max. rough in depth 6-1/4" 0010  
 •Min. rough in depth 3-3/8"

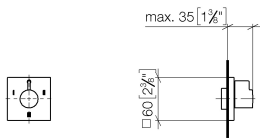


SYMETRICS Wall mounted three-way diverter - Brushed Platinum

SYMETRICS

36 210 985    Product version from 4/1/2022

mm [inches]

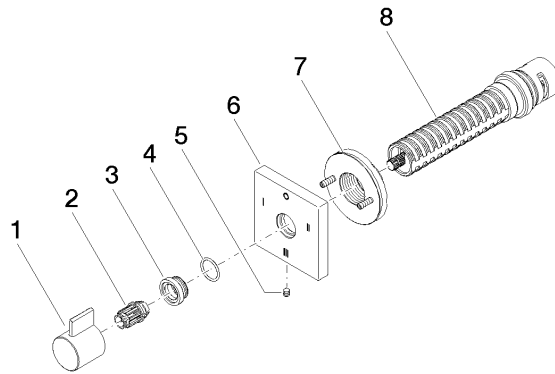


Codes & Standards

ADA	ASME A112.18.1	California Energy Commission (CEC)	cUPC
-----	----------------	------------------------------------	------

Certificates and sustainability

IAPMO\_4976 (



## Spare parts list

Number	Item Number	Designation	Number of units	Lead time
5	09 31 11 294 90	pin	1.00	2
2	09 12 12 005 90	fixing cap	1.00	2
3	09 12 12 043-06	base	1.00	10
7	90 21 02 181 00 90	disc	1.00	2
8	90 90 03 305 10 90	diverter	1.00	2
4	09 14 10 017 90	seal	1.00	2
1	09 20 98 002-06	handle	1.00	10
6	09 27 98 040-06	rosette	1.00	60