










IMO Volume Control clockwise-closing 1/2" - Chrome

IMO

36 310 671 Product version from 4/1/2024

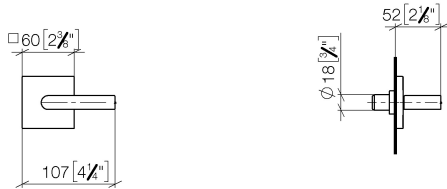


- Flange diameter 2-3/8"
- Ceramic disc cartridge

	Chrome	36 310 671-00
	Brushed Platinum	36 310 671-06
	Dark Chrome	36 310 671-19
	Brushed Light Gold	36 310 671-27
	Matte Black	36 310 671-33
	Brushed Chrome	36 310 671-93
	Brushed Dark Platinum	36 310 671-99

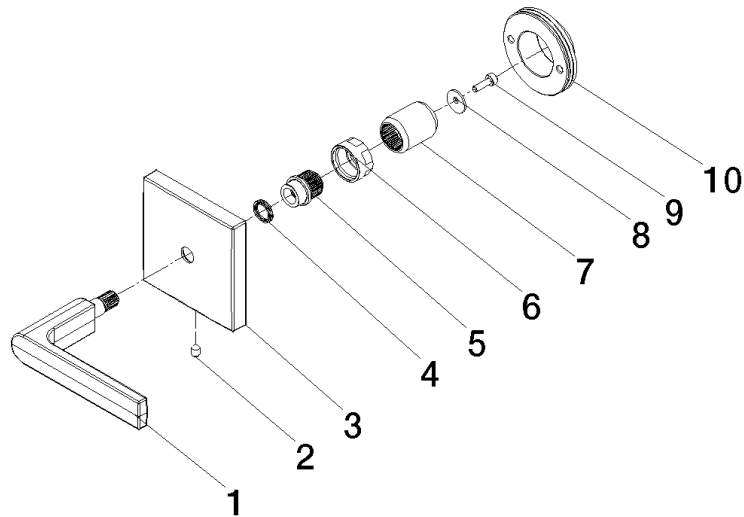
36 310 671 Product version from 4/1/2024

mm [inches]



36 310 671 Product version from 4/1/2024

Parts for other
finishes can be found
here: Brushed
Platinum



Spare parts list

Number	Item Number	Designation	Number of units	Lead time
9	09 30 30 167 90	screw	1.00	2
2	90 31 11 007 00 90	pin	1.00	2
6	09 23 30 074 90	nut	1.00	2
5	09 12 12 057 90	fixing cap	1.00	2
10	90 21 02 108 00 90	disc	1.00	2
1	90 20 67 024 00-00	handle	1.00	10
8	09 30 11 193 90	disc	1.00	2
4	09 14 03 187 90	seal	1.00	2
3	09 27 78 033-00	rosette	1.00	10
7	09 12 12 059 90	sleeve	1.00	2