




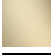



IMO Volume Control clockwise-closing 1/2" - Dark Chrome

IMO


36 310 671 Product version from 4/1/2024

- Flange diameter 2-3/8"
- Ceramic disc cartridge

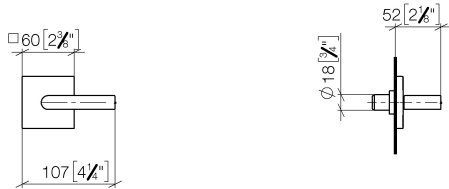


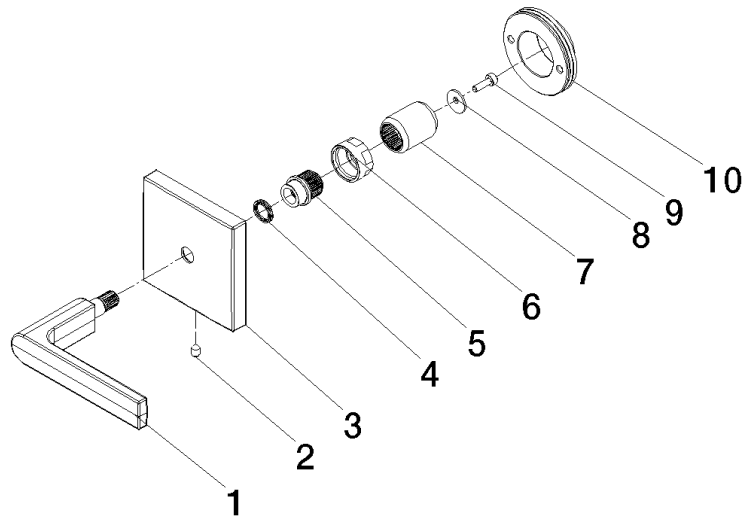
	Dark Chrome	36 310 671-19
	Chrome	36 310 671-00
	Brushed Platinum	36 310 671-06
	Brushed Light Gold	36 310 671-27
	Matte Black	36 310 671-33
	Brushed Chrome	36 310 671-93
	Brushed Dark Platinum	36 310 671-99

Required article

	Rough for volume control clockwise-closing 1/2" - <ul style="list-style-type: none">•Min. rough in depth "•Max. rough in depth "	35 621 970-90 0010
---	--	--------------------

mm [inches]





Spare parts list

Number	Item Number	Designation	Number of units	Lead time
5	09 12 12 057 90	fixing cap	1.00	2
1	90 20 67 024 00-19	handle	1.00	20
3	09 27 78 033-19	rosette	1.00	60
4	09 14 03 187 90	seal	1.00	2
10	90 21 02 108 00 90	disc	1.00	2
7	09 12 12 059 90	sleeve	1.00	2
6	09 23 30 074 90	nut	1.00	2
9	09 30 30 167 90	screw	1.00	2
8	09 30 11 193 90	disc	1.00	2
2	90 31 11 007 00 90	pin	1.00	2