

36 310 740
Product version from 7/1/2023

- Without flange
 - Handle Ø 2-3/8"



	Chrome	36 310 740-00
	Brushed Platinum	36 310 740-06
	Platinum	36 310 740-08
	Dark Chrome	36 310 740-19
	Light gold	36 310 740-26
	Brushed Durabrass (23kt Gold)	36 310 740-28
	Matte Black	36 310 740-33
	Brushed Dark Brass	36 310 740-39
	Brushed Bronze	36 310 740-42
	Brushed Champagne (22kt Gold)	36 310 740-46
	Champagne (22kt Gold)	36 310 740-47
	Brushed Chrome	36 310 740-93
	Brushed Dark Platinum	36 310 740-99

Required article



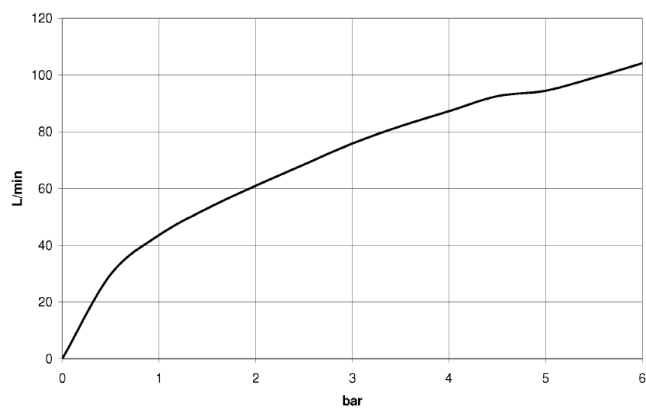
Rough for volume control clockwise-closing 1/2" -

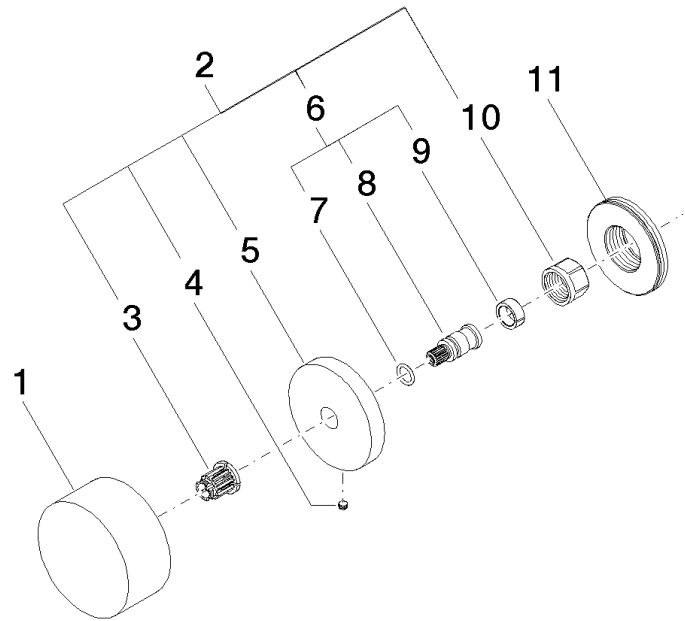
- Min. rough in depth 2-1/2"
- Max. rough in depth 5-1/8"

35 621 970-90
0010



Flow rate chart





Spare parts list

Number	Item Number	Designation	Number of units	Lead time
6	04 29 06 020 00-00	spindle	1.00	10
3	90 12 12 002 00 90	fixing cap	1.00	2
4	09 31 11 055 90	pin	1.00	2
1	09 20 74 004-00	handle	1.00	10
2	04 27 74 002 00-00	rosette	1.00	10
5	09 27 74 002-00	rosette	1.00	10
11	09 30 01 107 90	sleeve	1.00	2
8	09 29 06 020-00	spindle	1.00	10
9	90 14 15 020 03 90	ring	1.00	2
7	90 14 10 060 00 90	seal	1.00	2
10	90 23 30 023 00 90	nut	1.00	2