

Volume Control - Brushed Platinum

SERIES SPECIFIC

36 310 740 Product version from 7/1/2023



- Without flange
- Handle Ø 2-3/8"

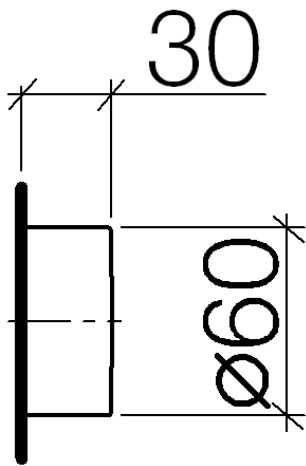
	Brushed Platinum	36 310 740-06
	Chrome	36 310 740-00
	Platinum	36 310 740-08
	Dark Chrome	36 310 740-19
	Light gold	36 310 740-26
	Brushed Durabronze (23kt Gold)	36 310 740-28
	Matte Black	36 310 740-33
	Brushed Dark Brass	36 310 740-39
	Brushed Bronze	36 310 740-42
	Brushed Champagne (22kt Gold)	36 310 740-46
	Champagne (22kt Gold)	36 310 740-47
	Brushed Chrome	36 310 740-93
	Brushed Dark Platinum	36 310 740-99

Required article

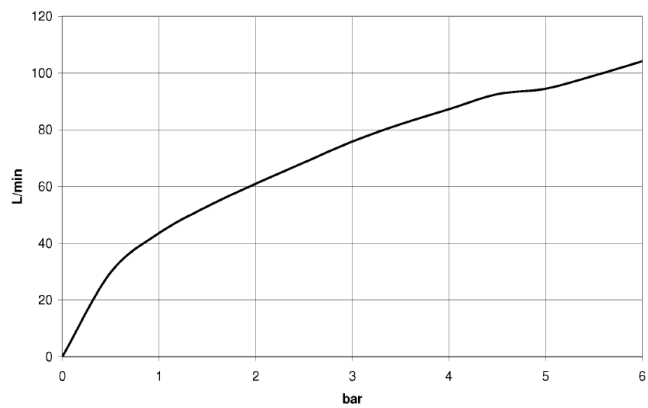


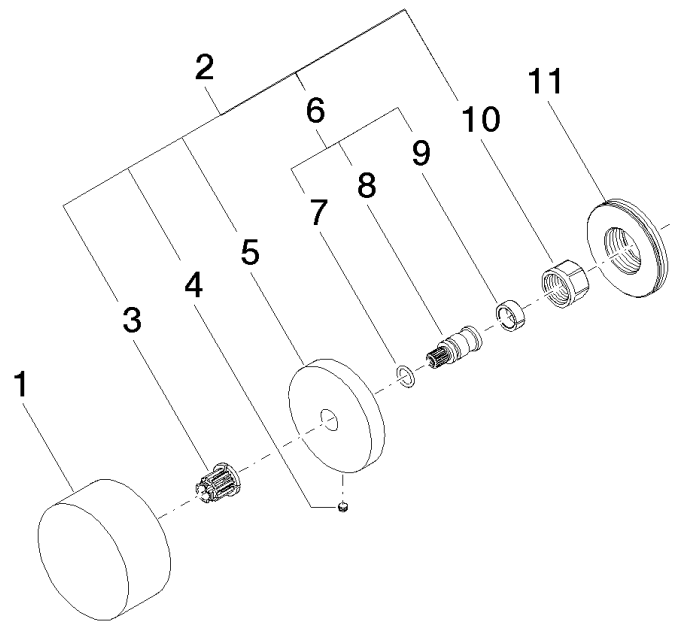
**Rough for volume control
clockwise-closing 1/2" -**
 •Min. rough in depth 2-1/2"
 •Max. rough in depth 5-1/8"

35 621 970-90
0010



Flow rate chart





Spare parts list

Number	Item Number	Designation	Number of units	Lead time
1	09 20 74 004-06	handle	1.00	10
11	09 30 01 107 90	sleeve	1.00	2
5	09 27 74 002-06	rosette	1.00	60
3	90 12 12 002 00 90	fixing cap	1.00	2
8	09 29 06 020-06	spindle	1.00	-
Spare part can no longer be ordered, please order the replacement item				
4	09 31 11 055 90	pin	1.00	2
6	04 29 06 020 00-00	spindle	1.00	10
2	04 27 74 002 00-06	rosette	1.00	10
10	90 23 30 023 00 90	nut	1.00	2
7	90 14 10 060 00 90	seal	1.00	2
9	90 14 15 020 03 90	ring	1.00	2