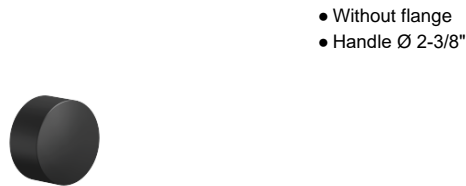


Volume Control - Matte Black

SERIES SPECIFIC


36 310 740

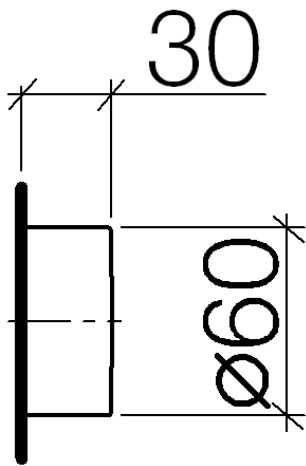
Product version from 7/1/2023



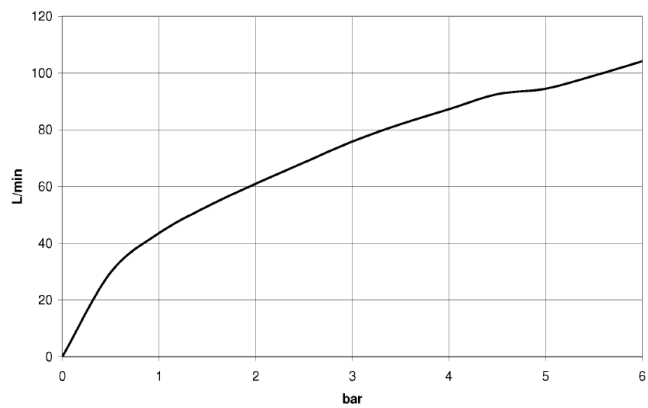
	Matte Black	36 310 740-33
	Chrome	36 310 740-00
	Brushed Platinum	36 310 740-06
	Platinum	36 310 740-08
	Dark Chrome	36 310 740-19
	Light gold	36 310 740-26
	Brushed Durabrass (23kt Gold)	36 310 740-28
	Brushed Dark Brass	36 310 740-39
	Brushed Bronze	36 310 740-42
	Brushed Champagne (22kt Gold)	36 310 740-46
	Champagne (22kt Gold)	36 310 740-47
	Brushed Chrome	36 310 740-93
	Brushed Dark Platinum	36 310 740-99

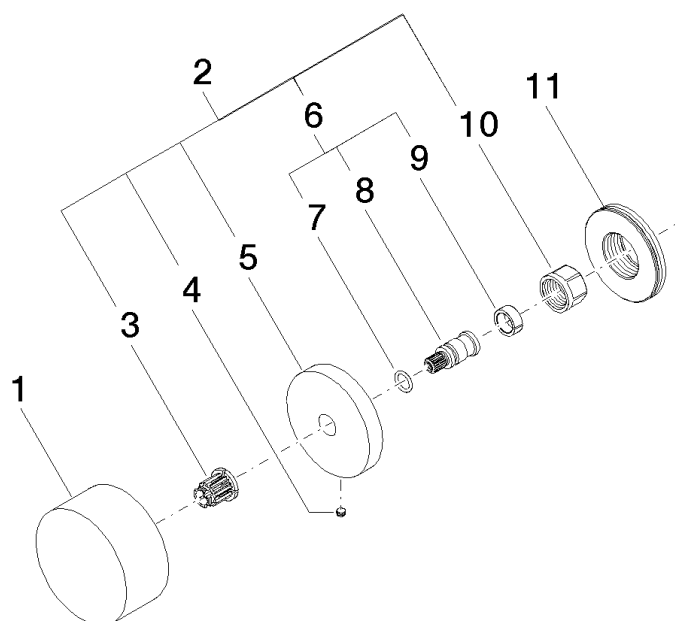
Required article

	Rough for volume control	35 621 970-90 0010
	clockwise-closing 1/2" -	
	<ul style="list-style-type: none"> Min. rough in depth 2-1/2" Max. rough in depth 5-1/8" 	



Flow rate chart





Spare parts list

Number	Item Number	Designation	Number of units	Lead time
5	09 27 74 002-33	rosette	1.00	60
4	09 31 11 055 90	pin	1.00	2
1	09 20 74 004-33	handle	1.00	30
3	90 12 12 002 00 90	fixing cap	1.00	2
11	09 30 01 107 90	sleeve	1.00	2
8	09 29 06 020-33	spindle	1.00	-
Spare part can no longer be ordered, please order the replacement item				
6	04 29 06 020 00-00	spindle	1.00	10
2	04 27 74 002 00-33	rosette	1.00	30
9	90 14 15 020 03 90	ring	1.00	2
10	90 23 30 023 00 90	nut	1.00	2
7	90 14 10 060 00 90	seal	1.00	2