

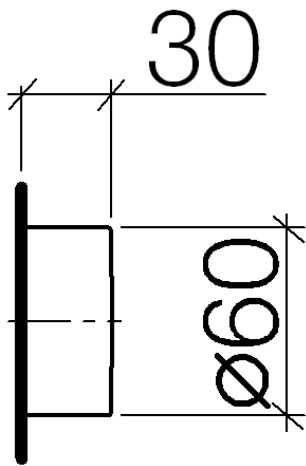
36 310 740

Product version from 7/1/2023

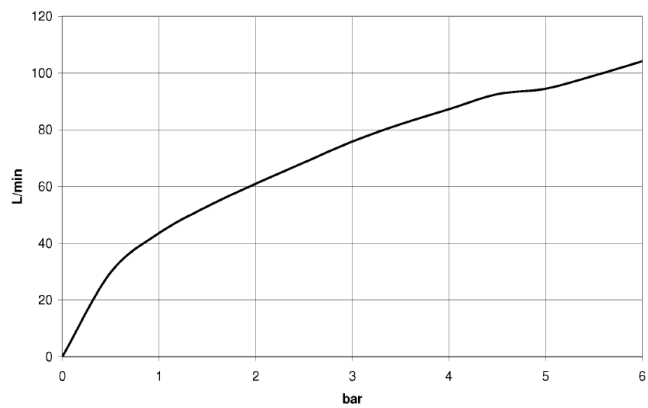


- Without flange
- Handle Ø 2-3/8"

	Brushed Dark Brass	36 310 740-39
	Chrome	36 310 740-00
	Brushed Platinum	36 310 740-06
	Platinum	36 310 740-08
	Dark Chrome	36 310 740-19
	Light gold	36 310 740-26
	Brushed Durabrass (23kt Gold)	36 310 740-28
	Matte Black	36 310 740-33
	Brushed Bronze	36 310 740-42
	Brushed Champagne (22kt Gold)	36 310 740-46
	Champagne (22kt Gold)	36 310 740-47
	Brushed Chrome	36 310 740-93
	Brushed Dark Platinum	36 310 740-99

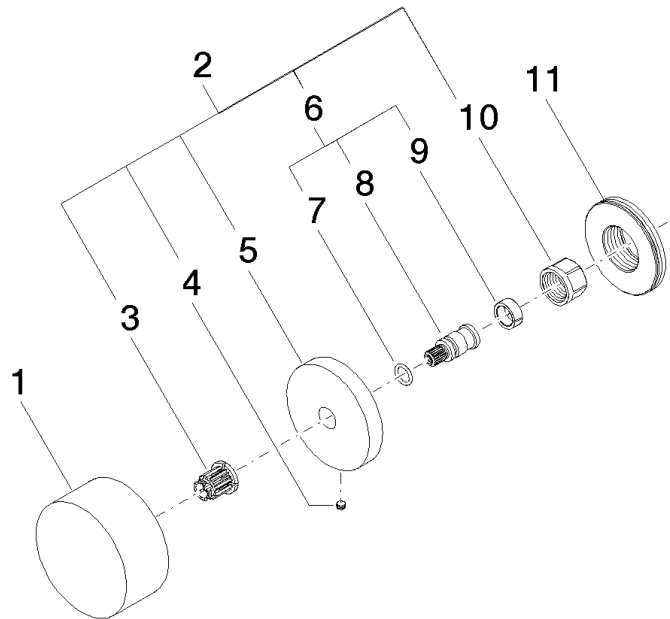


Flow rate chart



36 310 740 Product version from 7/1/2023

Parts for other  
finishes can be found  
here: [Chrome](#)



## Spare parts list

Number	Item Number	Designation	Number of units	Lead time
9	90 14 15 020 03 90	ring	1.00	2
1	09 20 74 004-39	handle	1.00	60
8	09 29 06 020-39	spindle	1.00	-
Spare part can no longer be ordered, please order the replacement item				
4	09 31 11 055 90	pin	1.00	2
3	90 12 12 002 00 90	fixing cap	1.00	2
6	04 29 06 020 00-39	spindle	1.00	-
Spare part can no longer be ordered, please order the replacement item				
11	09 30 01 107 90	sleeve	1.00	2
7	90 14 10 060 00 90	seal	1.00	2
10	90 23 30 023 00 90	nut	1.00	2
5	09 27 74 002-39	rosette	1.00	-
Spare part can no longer be ordered, please order the replacement item				
2	04 27 74 002 00-39	rosette	1.00	-
Spare part can no longer be ordered, please order the replacement item				