

# Volume Control - Brushed Dark Platinum

SERIES SPECIFIC

36 310 740    Product version from 7/1/2023

- Without flange
- Handle Ø 2-3/8"



	Brushed Dark Platinum	36 310 740-99
	Chrome	36 310 740-00
	Brushed Platinum	36 310 740-06
	Platinum	36 310 740-08
	Dark Chrome	36 310 740-19
	Light gold	36 310 740-26
	Brushed Durabronze (23kt Gold)	36 310 740-28
	Matte Black	36 310 740-33
	Brushed Dark Brass	36 310 740-39
	Brushed Bronze	36 310 740-42
	Brushed Champagne (22kt Gold)	36 310 740-46
	Champagne (22kt Gold)	36 310 740-47
	Brushed Chrome	36 310 740-93

## Required article



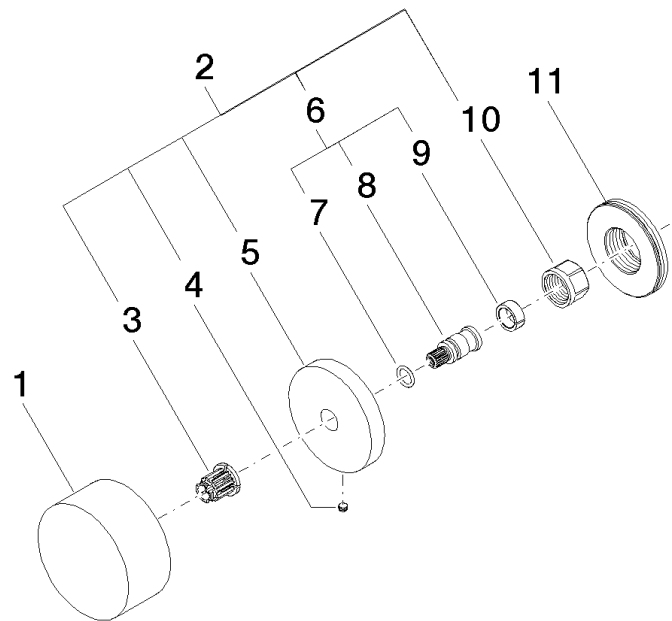
**Rough for volume control clockwise-closing 1/2" -**  
 •Min. rough in depth 2-1/2"  
 •Max. rough in depth 5-1/8"

35 621 970-90  
 0010



Flow rate chart





## Spare parts list

Number	Item Number	Designation	Number of units	Lead time
	11 09 30 01 107 90	sleeve	1.00	2
	4 09 31 11 055 90	pin	1.00	2
	2 04 27 74 002 00-99	rosette	1.00	20
	3 90 12 12 002 00 90	fixing cap	1.00	2
	8 09 29 06 020-99	spindle	1.00	-
Spare part can no longer be ordered, please order the replacement item				
	6 04 29 06 020 00-00	spindle	1.00	10
	1 09 20 74 004-99	handle	1.00	20
	5 09 27 74 002-99	rosette	1.00	20
	7 90 14 10 060 00 90	seal	1.00	2
	10 90 23 30 023 00 90	nut	1.00	2
	9 90 14 15 020 03 90	ring	1.00	2