

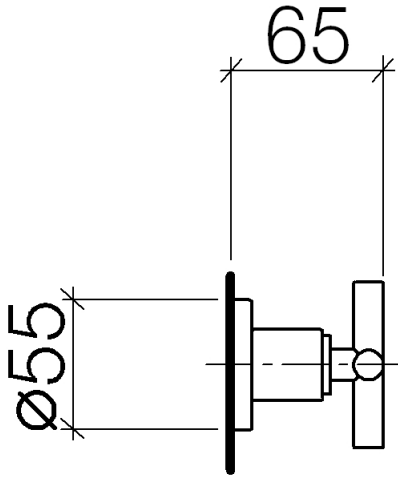
TARA Volume Control - Brushed Bronze
TARA

36 310 892
Product version from 10/14/2020

- Flange diameter 2-1/8"
(ADA)



	Brushed Bronze	36 310 892-42
	Chrome	36 310 892-00
	Brushed Platinum	36 310 892-06
	Platinum	36 310 892-08
	Durabrass (23kt Gold)	36 310 892-09
	Brushed Light Gold	36 310 892-27
	Brushed Durabrass (23kt Gold)	36 310 892-28
	Matte Black	36 310 892-33
	Brushed Dark Brass	36 310 892-39
	Brushed Champagne (22kt Gold)	36 310 892-46
	Champagne (22kt Gold)	36 310 892-47
	Brushed Chrome	36 310 892-93
	Brushed Dark Platinum	36 310 892-99



Codes & Standards

ADA

ASME A112.18.1

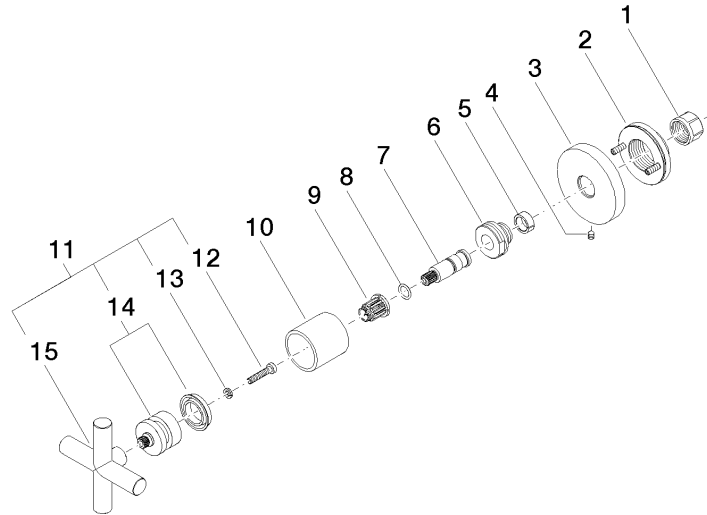
cUPC

Certificates and sustainability

IAPMO_4976 (

36 310 892 Product version from 10/14/2020

Parts for other
finishes can be found
here: [Chrome](#)



Spare parts list

Number	Item Number	Designation	Number of units	Lead time
7	09 29 06 022 90	spindle	1.00	2
12	90 30 30 075 00 90	screw	1.00	2
5	90 14 15 020 03 90	ring	1.00	2
8	90 14 10 060 00 90	seal	1.00	2
2	90 21 02 108 00 90	disc	1.00	2
11	90 20 89 010 10-42	handle	1.00	20
1	90 23 30 023 00 90	nut	1.00	2
9	90 12 12 002 00 90	fixing cap	1.00	2
4	90 31 11 007 00 90	pin	1.00	2
14	90 12 12 007 00-42	base	1.00	20
13	90 30 11 029 00 90	disc	1.00	2
15	09 20 89 010-42	handle	1.00	20
6	09 24 05 002 90	nipple	1.00	2
10	09 21 02 144-42	sleeve	1.00	60
3	09 27 89 108-42	rosette	1.00	60