

TARA Volume Control - Brushed Champagne (22kt Gold)

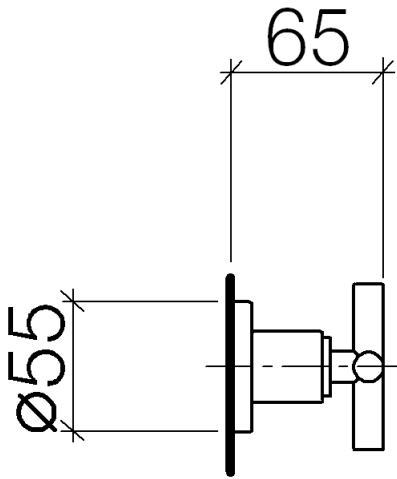
TARA

36 310 892 Product version from 10/14/2020

- Flange diameter 2-1/8"
- (ADA)



| | | |
|---|-------------------------------|---------------|
|  | Brushed Champagne (22kt Gold) | 36 310 892-46 |
| | Chrome | 36 310 892-00 |
| | Brushed Platinum | 36 310 892-06 |
| | Platinum | 36 310 892-08 |
| | Durabross (23kt Gold) | 36 310 892-09 |
|  | Brushed Light Gold | 36 310 892-27 |
|  | Brushed Durabross (23kt Gold) | 36 310 892-28 |
| | Matte Black | 36 310 892-33 |
|  | Brushed Dark Brass | 36 310 892-39 |
|  | Brushed Bronze | 36 310 892-42 |
|  | Champagne (22kt Gold) | 36 310 892-47 |
| | Brushed Chrome | 36 310 892-93 |
| | Brushed Dark Platinum | 36 310 892-99 |



Codes & Standards

ADA

ASME A112.18.1

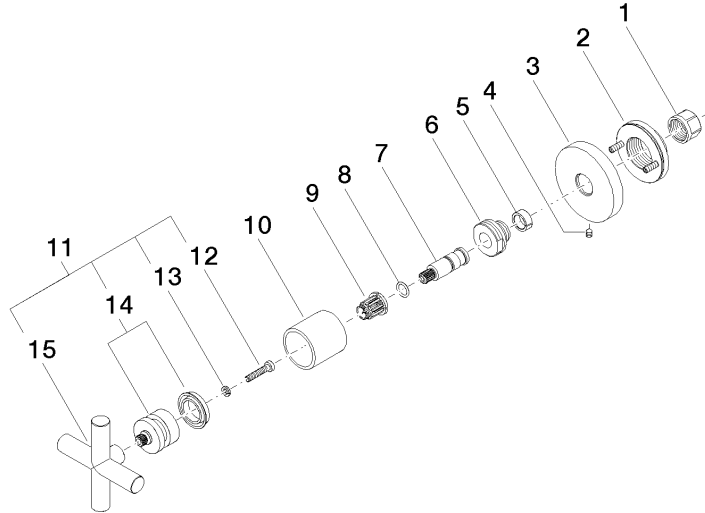
cUPC

Certificates and sustainability

IAPMO_4976 (

36 310 892 Product version from 10/14/2020

Parts for other
finishes can be found
here: [Chrome](#)



Spare parts list

| Number | Item Number | Designation | Number of units | Lead time |
|--------|--------------------|-------------|-----------------|-----------|
| 14 | 90 12 12 007 00-46 | base | 1.00 | 30 |
| 2 | 90 21 02 108 00 90 | disc | 1.00 | 2 |
| 15 | 09 20 89 010-46 | handle | 1.00 | 30 |
| 7 | 09 29 06 022 90 | spindle | 1.00 | 2 |
| 6 | 09 24 05 002 90 | nipple | 1.00 | 2 |
| 10 | 09 21 02 144-46 | sleeve | 1.00 | 60 |
| 9 | 90 12 12 002 00 90 | fixing cap | 1.00 | 2 |
| 3 | 09 27 89 108-46 | rosette | 1.00 | 30 |
| 8 | 90 14 10 060 00 90 | seal | 1.00 | 2 |
| 11 | 90 20 89 010 10-46 | handle | 1.00 | 30 |
| 5 | 90 14 15 020 03 90 | ring | 1.00 | 2 |
| 1 | 90 23 30 023 00 90 | nut | 1.00 | 2 |
| 13 | 90 30 11 029 00 90 | disc | 1.00 | 2 |
| 12 | 90 30 30 075 00 90 | screw | 1.00 | 2 |
| 4 | 90 31 11 007 00 90 | pin | 1.00 | 2 |