

36 416 809



- Cover plate Ø 4-7/8"
- Temperature control handle with safety lock at 100 °F/ 38°C
(ADA)
- (ADA)

	Brushed Platinum	36 416 809-06
	Chrome	36 416 809-00
	Platinum	36 416 809-08
	Dark Chrome	36 416 809-19
	Brushed Durabronze (23kt Gold)	36 416 809-28
	Brushed Bronze	36 416 809-42
	Brushed Champagne (22kt Gold)	36 416 809-46
	Champagne (22kt Gold)	36 416 809-47
	Brushed Dark Platinum	36 416 809-99

Required article



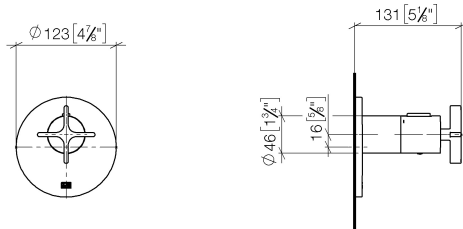
xTOOL Concealed thermostat rough -

35 517 970-90
0010

- Max. rough in depth 6-1/8"
- Min. rough in depth 3-1/8"

36 416 809

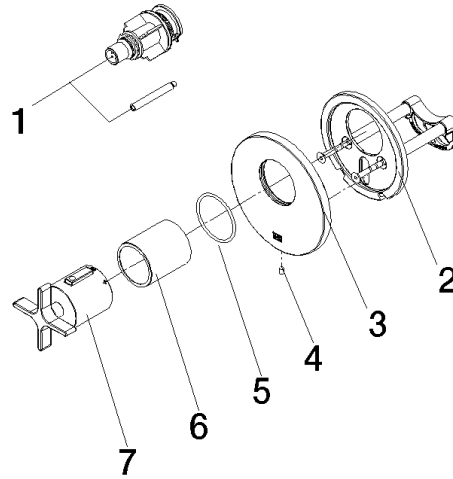
mm [inches]



Codes & Standards

ADA

36 416 809



Spare parts list

Number	Item Number	Designation	Number of units	Lead time
7	90 17 33 029 00-06	handle	1.00	10
4	09 31 11 048 90	pin	1.00	2
2	90 11 01 196 00 90	base	1.00	2
3	09 11 02 537-06	cover	1.00	10
1	12 178 970 90	Extension 1-3/4" -	1.00	2
6	90 21 02 112 00-06	sleeve	1.00	10
5	90 14 10 049 00 90	seal	1.00	2