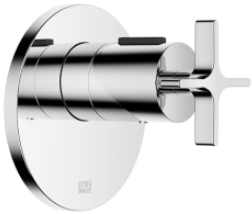


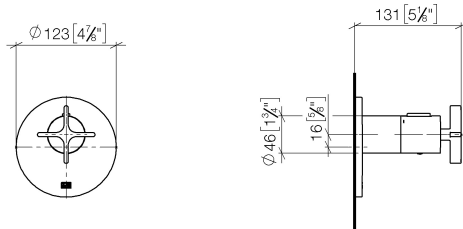
36 416 809
Product version from 4/1/2025



- Cover plate Ø 4-7/8"
  - Temperature control handle with safety lock at 100 °F/ 38°C
(ADA)

	Brushed Dark Brass	36 416 809-39
	Chrome	36 416 809-00
	Brushed Platinum	36 416 809-06
	Platinum	36 416 809-08
	Dark Chrome	36 416 809-19
	Brushed Durabronze (23kt Gold)	36 416 809-28
	Brushed Bronze	36 416 809-42
	Brushed Champagne (22kt Gold)	36 416 809-46
	Champagne (22kt Gold)	36 416 809-47
	Brushed Dark Platinum	36 416 809-99

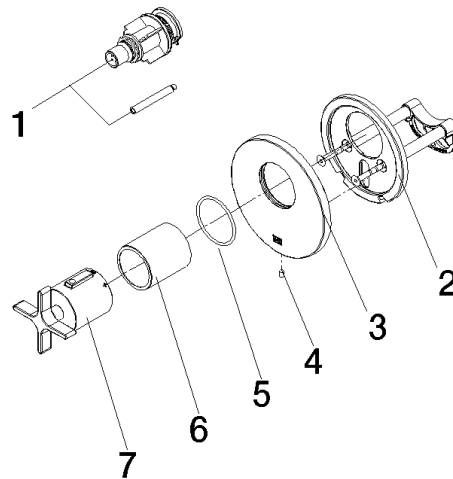
mm [inches]



## Codes & Standards

ADA

Parts for other  
finishes can be found  
here: [Chrome](#)



## Spare parts list

Number	Item Number	Designation	Number of units	Lead time
5	90 14 10 049 00 90	seal	1.00	2
1	12 178 970 90	Extension 1-3/4" -	1.00	2
2	90 11 01 196 00 90	base	1.00	2
4	09 31 11 048 90	pin	1.00	2
3	09 11 02 537-39	cover	1.00	60
6	90 21 02 112 00-39	sleeve	1.00	30
7	90 17 33 029 00-39	handle	1.00	30