









MADISON xTOOL Concealed thermostat without diverter - Brushed Dark Platinum

36 416 977    Product version from 1/1/2022



- Cover plate Ø 4-7/8"
- Temperature control handle with safety lock at 100 °F/ 38°C

	Brushed Dark Platinum	36 416 977-99
	Chrome	36 416 977-00
	Brushed Platinum	36 416 977-06
	Platinum	36 416 977-08
	Durabrass (23kt Gold)	36 416 977-09
	Brushed Durabrass (23kt Gold)	36 416 977-28

Required article

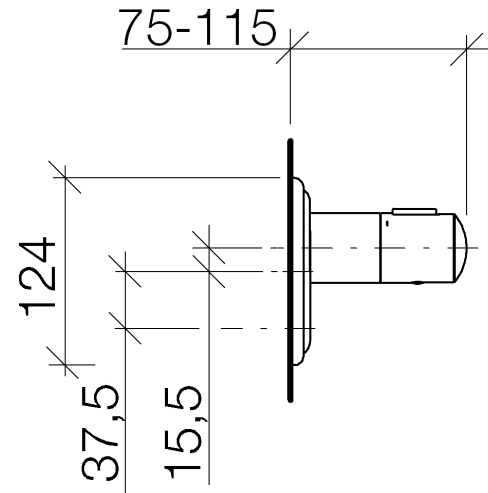


- |   |                    |
|---|--------------------|
| <b>xTOOL Concealed thermostat rough -</b> | 35 517 970-90 0010 |
| •Min. rough in depth "                    |                    |
| •Max. rough in depth "                    |                    |



MADISON xTOOL Concealed thermostat without diverter - Brushed Dark  
Platinum

36 416 977 Product version from 1/1/2022



Codes & Standards

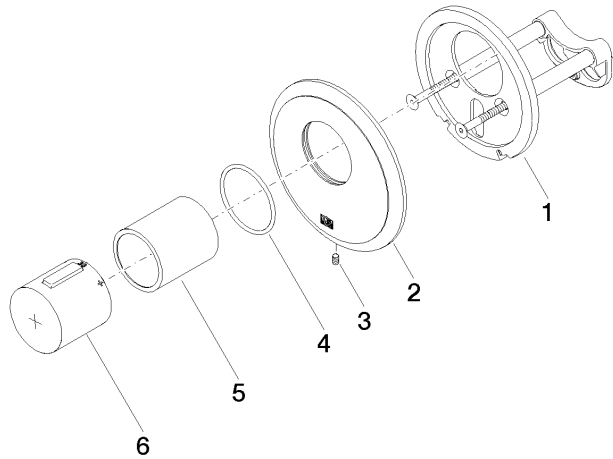
ASME A112.18.1 cUPC

Certificates

IAPMO\_4976 (

MADISON xTOOL Concealed thermostat without diverter - Brushed Dark  
Platinum

36 416 977    Product version from 1/1/2022



Spare parts list

Number	Item Number	Designation	Number of units	Lead time
1	90 11 01 196 00 90	base	1	2
2	09 11 02 543-99	cover	1	20
3	09 31 11 048 90	pin	1	2
4	90 14 10 049 00 90	seal	1	2
5	90 21 02 112 00-99	sleeve	1	20
6	90 17 33 017 00-99	handle	1	20