










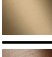
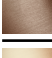





## xTOOL Concealed thermostat without diverter - Brushed Platinum

SERIES-VARIOUS

36 416 979 Product version up to 2/2/2021



- Cover plate Ø 4-7/8"
- Temperature control handle with safety lock at 100 °F/ 38°C

	Brushed Platinum	36 416 979-06
	Chrome	36 416 979-00
	Platinum	36 416 979-08
	Durabrand (23kt Gold)	36 416 979-09
	Dark Chrome	36 416 979-19
	Light gold	36 416 979-26
	Brushed Light Gold	36 416 979-27
	Brushed Durabrand (23kt Gold)	36 416 979-28
	Matte Black	36 416 979-33
	Brushed Dark Brass	36 416 979-39
	Brushed Bronze	36 416 979-42
	Brushed Champagne (22kt Gold)	36 416 979-46
	Champagne (22kt Gold)	36 416 979-47
	Cyprus	36 416 979-49
	Brushed Chrome	36 416 979-93
	Brushed Dark Platinum	36 416 979-99

### Required article



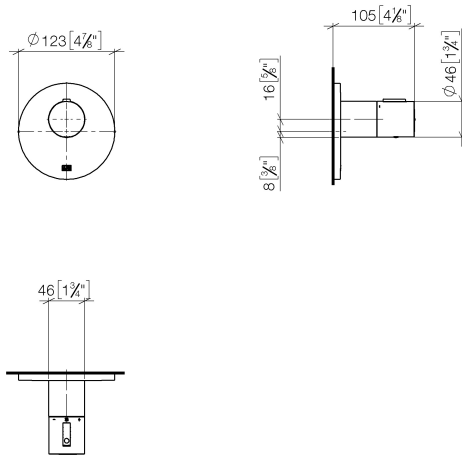
#### xTOOL Concealed thermostat rough -

- Min. rough in depth 3-1/8"
- Max. rough in depth 6-1/8"

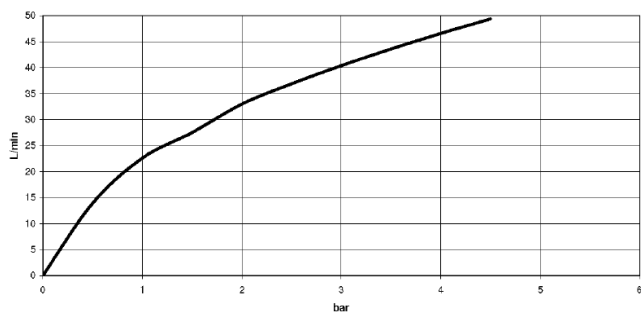
35 517 970-90  
0010

36 416 979 Product version up to 2/2/2021

mm [inches]



### Flow rate chart



### Codes & Standards

ASME A112.18.1 cUPC



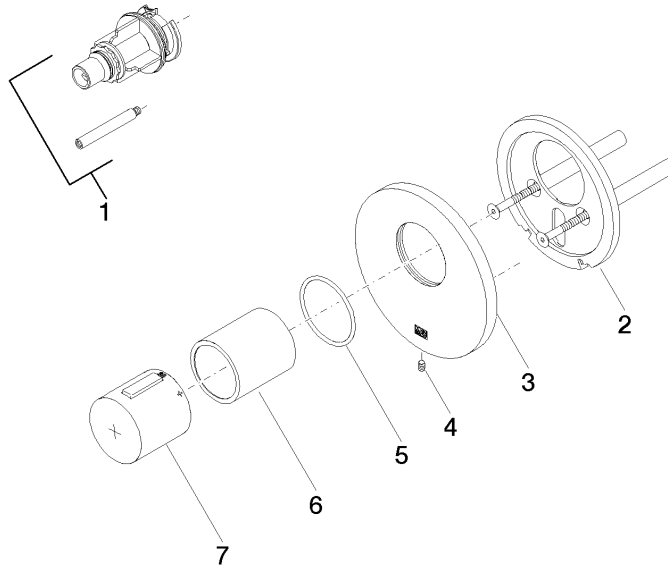
## xTOOL Concealed thermostat without diverter - Brushed Platinum

SERIES-VARIOUS

36 416 979 Product version up to 2/2/2021

Certificates and sustainability

IAPMO\_4976 (



## Spare parts list

Number	Item Number	Designation	Number of units	Lead time
4	09 31 11 048 90	pin	1.00	2
2	90 11 01 196 00 90	base	1.00	2
3	09 11 02 537-06	cover	1.00	10
7	90 17 33 017 00-06	handle	1.00	10
1	12 178 970 90	Extension 1-3/4" -	1.00	2
6	90 21 02 112 00-06	sleeve	1.00	10
5	90 14 10 049 00 90	seal	1.00	2