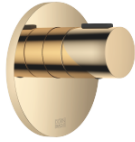


















xTOOL Concealed thermostat without diverter - Durabrand (23kt Gold)

SERIES-VARIOUS

36 416 979 Product version up to 2/2/2021

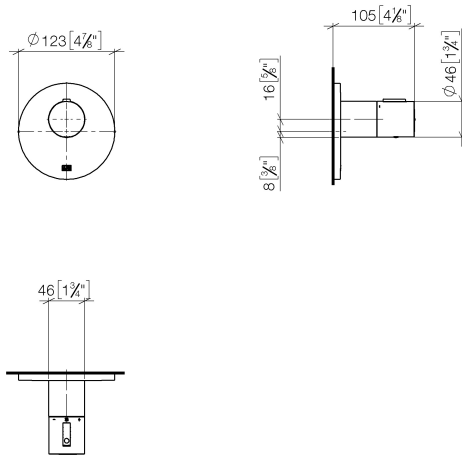


- Cover plate Ø 4-7/8"
- Temperature control handle with safety lock at 100 °F/ 38°C

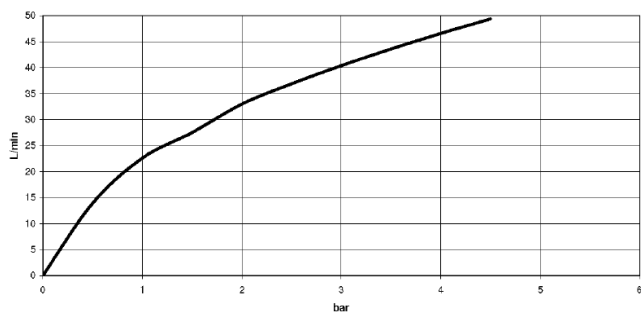
	Durabrand (23kt Gold)	36 416 979-09
	Chrome	36 416 979-00
	Brushed Platinum	36 416 979-06
	Platinum	36 416 979-08
	Dark Chrome	36 416 979-19
	Light gold	36 416 979-26
	Brushed Light Gold	36 416 979-27
	Brushed Durabrand (23kt Gold)	36 416 979-28
	Matte Black	36 416 979-33
	Brushed Dark Brass	36 416 979-39
	Brushed Bronze	36 416 979-42
	Brushed Champagne (22kt Gold)	36 416 979-46
	Champagne (22kt Gold)	36 416 979-47
	Cyprus	36 416 979-49
	Brushed Chrome	36 416 979-93
	Brushed Dark Platinum	36 416 979-99

36 416 979 Product version up to 2/2/2021

mm [inches]



Flow rate chart



Codes & Standards

ASME A112.18.1 cUPC



xTOOL Concealed thermostat without diverter - Durabronz (23kt Gold)

SERIES-VARIOUS

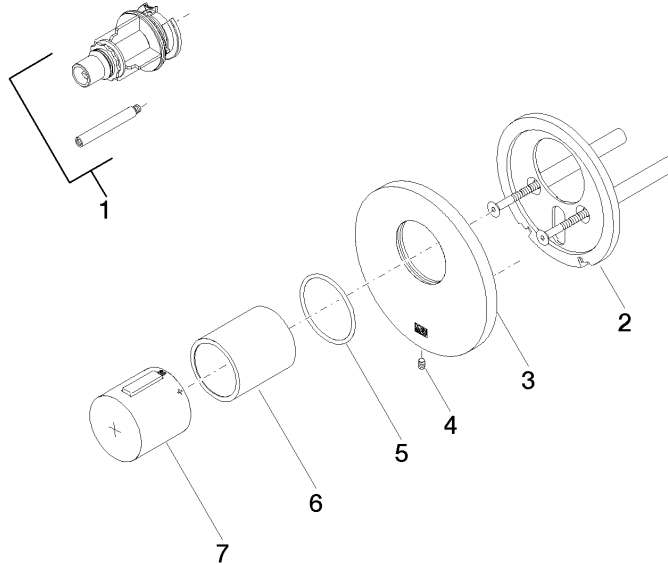
36 416 979 Product version up to 2/2/2021

Certificates and sustainability

IAPMO_4976 (

36 416 979 Product version up to 2/2/2021

Parts for other
finishes can be found
here: [Chrome](#)



Spare parts list

Number	Item Number	Designation	Number of units	Lead time
1	12 178 970 90	Extension 1-3/4" -	1.00	2
3	09 11 02 537-09	cover	1.00	40
7	90 17 33 017 00-09	handle	1.00	40
4	09 31 11 048 90	pin	1.00	2
2	90 11 01 196 00 90	base	1.00	2
6	90 21 02 112 00-09	sleeve	1.00	40
5	90 14 10 049 00 90	seal	1.00	2