

xTOOL Concealed thermostat without diverter - Matte Black

SERIES-VARIOUS

36 416 979 Product version up to 2/2/2021



- Cover plate Ø 4-7/8"
- Temperature control handle with safety lock at 100 °F/ 38°C

	Matte Black	36 416 979-33
	Chrome	36 416 979-00
	Brushed Platinum	36 416 979-06
	Platinum	36 416 979-08
	Durabrand (23kt Gold)	36 416 979-09
	Dark Chrome	36 416 979-19
	Light gold	36 416 979-26
	Brushed Light Gold	36 416 979-27
	Brushed Durabrand (23kt Gold)	36 416 979-28
	Brushed Dark Brass	36 416 979-39
	Brushed Bronze	36 416 979-42
	Brushed Champagne (22kt Gold)	36 416 979-46
	Champagne (22kt Gold)	36 416 979-47
	Cyprus	36 416 979-49
	Brushed Chrome	36 416 979-93
	Brushed Dark Platinum	36 416 979-99

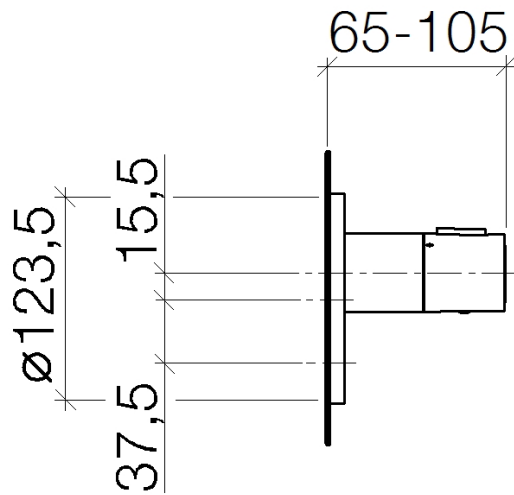
Required article



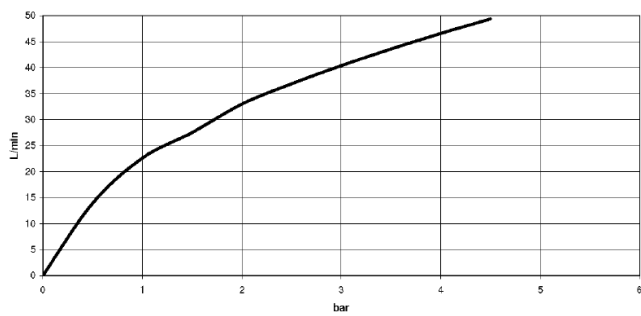
xTOOL Concealed thermostat rough -

- Min. rough in depth 3-1/8"
- Max. rough in depth 6-1/8"

35 517 970-90
0010



Flow rate chart



Codes & Standards

ASME A112.18.1 cUPC



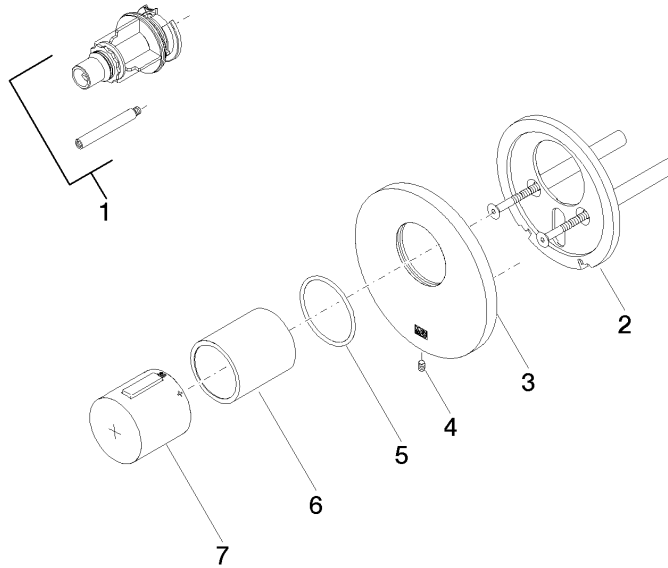
xTOOL Concealed thermostat without diverter - Matte Black

SERIES-VARIOUS

36 416 979 Product version up to 2/2/2021

Certificates and sustainability

IAPMO_4976 (



Spare parts list

Number	Item Number	Designation	Number of units	Lead time
2	90 11 01 196 00 90	base	1.00	2
7	90 17 33 017 00-33	handle	1.00	30
3	09 11 02 537-33	cover	1.00	30
4	09 31 11 048 90	pin	1.00	2
1	12 178 970 90	Extension 1-3/4" -	1.00	2
6	90 21 02 112 00-33	sleeve	1.00	30
5	90 14 10 049 00 90	seal	1.00	2