

Concealed thermostat with two-way diverter - Chrome

36 426 670 Product version from 6/30/2022



- Diverter with integrated volume control
 - Cover plate 5-7/8" x 3-1/2"
 - Temperature control handle with safety lock at 100 °F/ 38°C
 - Max. temperature can be set on the trim
 - single flow function only
- (ADA)**

(ADA)

| | | |
|--|-------------------------------|--------------------|
| | Chrome | 36 426 670-00 0010 |
| | Brushed Platinum | 36 426 670-06 0010 |
| | Platinum | 36 426 670-08 0010 |
| | Dark Chrome | 36 426 670-19 0010 |
| | Brushed Light Gold | 36 426 670-27 0010 |
| | Brushed Durabrass (23kt Gold) | 36 426 670-28 0010 |
| | Matte Black | 36 426 670-33 0010 |
| | Brushed Champagne (22kt Gold) | 36 426 670-46 0010 |
| | Champagne (22kt Gold) | 36 426 670-47 0010 |
| | Brushed Chrome | 36 426 670-93 0010 |
| | Brushed Dark Platinum | 36 426 670-99 0010 |

Required article



- Concealed thermostat for one- and two-way outlets -**
- Max. rough in depth "
 - Min. rough in depth "

35 426 970-90 0010

Recommended article



- xGRID Mounting bracket for drywall construction -**

12 340 970 90

Required article



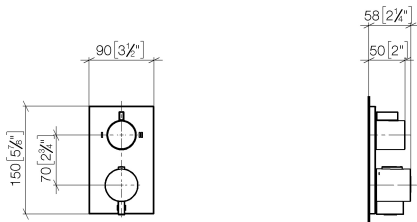
xGRID Installation track 21.85" - 12 360 970 90



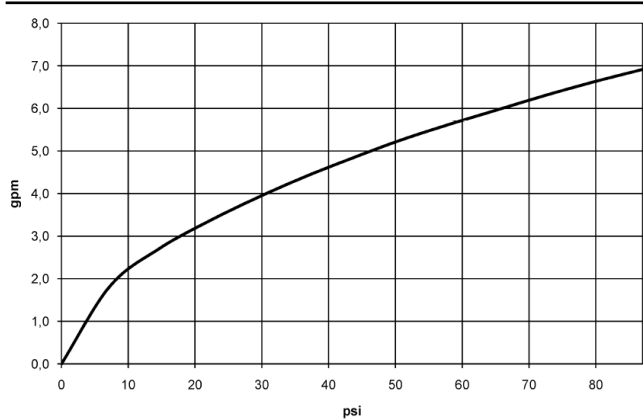
Concealed thermostat with two-way diverter - Chrome

36 426 670 Product version from 6/30/2022

mm [inches]



Flow rate chart



Codes & Standards

| | | | |
|------|----------------|---------------------------|------------------------------------|
| ADA | ASME A112.18.1 | ASME A112.18.1/CSA B125.1 | California Energy Commission (CEC) |
| cUPC | | | |



Concealed thermostat with two-way diverter - Chrome

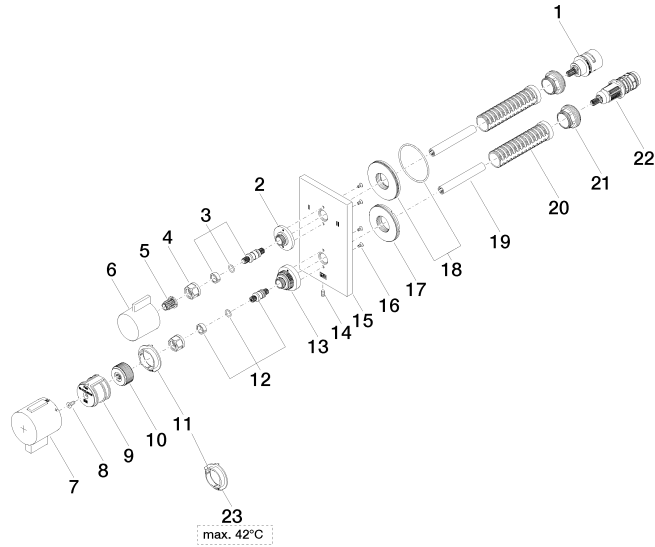
36 426 670 Product version from 6/30/2022

Certificates

IAPMO_4976 (

Concealed thermostat with two-way diverter - Chrome

36 426 670 Product version from 6/30/2022





Concealed thermostat with two-way diverter - Chrome

36 426 670 Product version from 6/30/2022

Spare parts list

| Number | Item Number | Designation | Number of units | Lead time |
|--------|--------------------|-------------|-----------------|-----------|
| 1 | 90 90 03 163 00 90 | diverter | 1 | 2 |
| 2 | 09 12 12 053-00 | base | 1 | 10 |
| 3 | 04 29 06 111 01-00 | spindle | 1 | 10 |
| 4 | 90 23 30 023 00 90 | nut | 2 | 2 |
| 5 | 90 12 12 002 00 90 | fixing cap | 1 | 2 |
| 6 | 09 20 67 006-00 | handle | 1 | 10 |
| 7 | 90 17 33 019 00-00 | handle | 1 | 10 |
| 8 | 90 30 30 124 00 90 | screw | 1 | 2 |
| 9 | 90 12 12 052 00 90 | base | 1 | 2 |
| 10 | 09 12 12 054 90 | base | 1 | 2 |
| 11 | 09 28 10 190 90 | regulator | 1 | 2 |
| 12 | 04 29 06 024 01-00 | spindle | 1 | 10 |
| 13 | 09 12 12 051-00 | base | 1 | 10 |
| 14 | 09 31 11 134 90 | pin | 1 | 2 |
| 15 | 09 11 02 263-00 | plate | 1 | 10 |
| 16 | 09 30 30 157 90 | screw | 4 | 2 |
| 17 | 09 30 01 296 90 | disc | 1 | 2 |
| 18 | 90 30 01 190 00 90 | disc | 1 | 2 |
| 19 | 90 23 01 124 00 90 | sleeve | 2 | 2 |
| 20 | 90 18 40 077 01 90 | spindle | 2 | 2 |
| 21 | 09 24 04 257 90 | nut | 2 | 2 |
| 22 | 90 15 02 013 00 90 | cartridge | 1 | 2 |
| 23 | 09 28 10 189 90 | regulator | 1 | 2 |