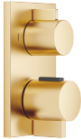




Concealed thermostat with two-way diverter - Brushed Durabrass (23kt Gold)

SERIES SPECIFIC

36 426 670 Product version up to 8/24/2020



- Diverter with integrated volume control
- Cover plate 5-7/8" x 3-1/2"
- Temperature control handle with safety lock at 100 °F/ 38°C
- Max. temperature can be set on the trim
- single flow function only

(ADA)

	Brushed Durabrass (23kt Gold)	36 426 670-28 0010
	Chrome	36 426 670-00 0010
	Brushed Platinum	36 426 670-06 0010
	Platinum	36 426 670-08 0010
	Dark Chrome	36 426 670-19 0010
	Brushed Light Gold	36 426 670-27 0010
	Matte Black	36 426 670-33 0010
	Brushed Champagne (22kt Gold)	36 426 670-46 0010
	Champagne (22kt Gold)	36 426 670-47 0010
	Brushed Chrome	36 426 670-93 0010
	Brushed Dark Platinum	36 426 670-99 0010

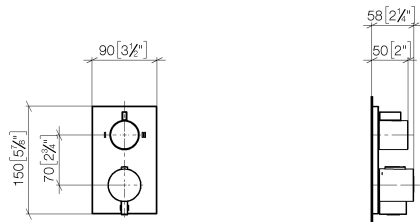


Concealed thermostat with two-way diverter - Brushed Durabronze (23kt Gold)

SERIES SPECIFIC

36 426 670 Product version up to 8/24/2020

mm [inches]



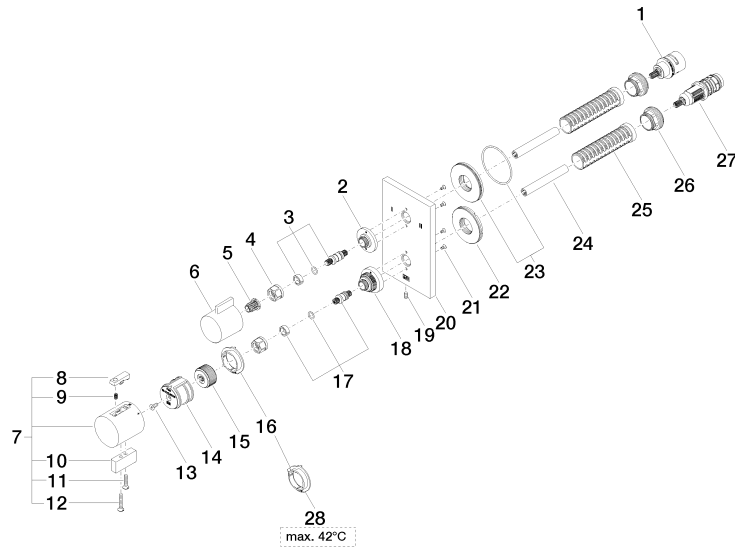
Codes & Standards

ADA	California Energy Commission (CEC)
-----	------------------------------------

Concealed thermostat with two-way diverter - Brushed Durabronz (23kt Gold) SERIES SPECIFIC

36 426 670 Product version up to 8/24/2020

Parts for other
finishes can be found
here: [Chrome](#)





Concealed thermostat with two-way diverter - Brushed Durabrass (23kt Gold) SERIES SPECIFIC

36 426 670 Product version up to 8/24/2020

Spare parts list

Number	Item Number	Designation	Number of units	Lead time
6	09 20 67 006-28	handle	1.00	20
12	09 30 30 160-28	screw	1.00	20
23	90 30 01 190 00 90	disc	1.00	2
15	09 12 12 054 90	base	1.00	2
20	09 11 02 263-28	plate	1.00	20
18	09 12 12 051-28	base	1.00	20
9	90 16 02 027 00 90	spring	1.00	2
16	09 28 10 190 90	regulator	1.00	2
7	04 17 33 006 00-28	handle	1.00	60
19	09 31 11 134 90	pin	1.00	2
11	09 30 30 159-28	screw	1.00	20
2	09 12 12 053-28	base	1.00	20
28	09 28 10 189 90	regulator	1.00	2
1	90 90 03 163 00 90	diverter	1.00	2
26	09 24 04 257 90	nut	2.00	2
27	90 15 02 013 00 90	cartridge	1.00	2
5	90 12 12 002 00 90	fixing cap	1.00	2
10	09 20 33 006-28	handle	1.00	20
21	09 30 30 157 90	screw	4.00	2
22	09 30 01 296 90	disc	1.00	2
24	90 23 01 124 00 90	sleeve	2.00	2
25	90 18 40 077 01 90	spindle	2.00	2
14	90 12 12 052 00 90	base	1.00	2
13	90 30 30 124 00 90	screw	1.00	2
17	04 29 06 024 01-00	spindle	1.00	10
3	04 29 06 111 01-00	spindle	1.00	10
4	90 23 30 023 00 90	nut	2.00	2
8	90 21 33 011 00-13	handle	1.00	2