



Concealed thermostat with two-way diverter - Matte Black

SERIES SPECIFIC

36 426 670 Product version up to 8/24/2020




- Diverter with integrated volume control
 - Cover plate 5-7/8" x 3-1/2"
 - Temperature control handle with safety lock at 100 °F/ 38°C
 - Max. temperature can be set on the trim
 - single flow function only
- (ADA)**


(ADA)

	Matte Black	36 426 670-33 0010
	Chrome	36 426 670-00 0010
	Brushed Platinum	36 426 670-06 0010
	Platinum	36 426 670-08 0010
	Dark Chrome	36 426 670-19 0010
	Brushed Light Gold	36 426 670-27 0010
	Brushed Durabronze (23kt Gold)	36 426 670-28 0010
	Brushed Champagne (22kt Gold)	36 426 670-46 0010
	Champagne (22kt Gold)	36 426 670-47 0010
	Brushed Chrome	36 426 670-93 0010
	Brushed Dark Platinum	36 426 670-99 0010


Required article

	Concealed thermostat for one- and two-way outlets - <ul style="list-style-type: none">•Max. rough in depth 5-3/8"•Min. rough in depth 3-1/8"	35 426 970-90 0010
---	--	--------------------

Required article

	xGRID Installation track 21.85" -	12 360 970 90
---	--	---------------

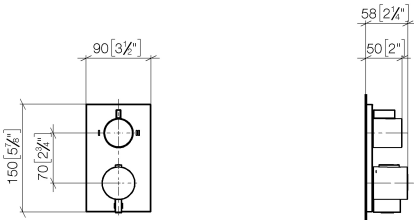
Recommended article

	xGRID Mounting bracket for drywall construction -	12 340 970 90
---	--	---------------

36 426 670

Product version up to 8/24/2020

mm [inches]



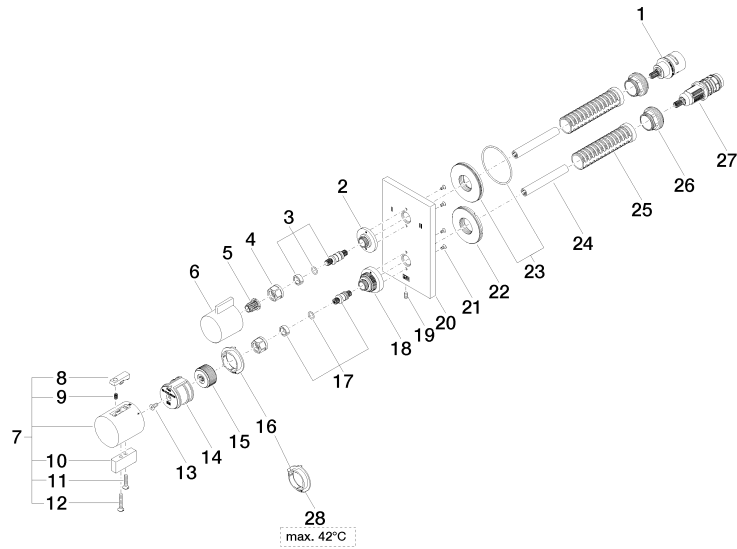
Codes & Standards			
ADA	ASME A112.18.1	California Energy Commission (CEC)	cUPC

Certificates and sustainability
IAPMO_4976 (

Concealed thermostat with two-way diverter - Matte Black

SERIES SPECIFIC

36 426 670 Product version up to 8/24/2020





Concealed thermostat with two-way diverter - Matte Black

SERIES SPECIFIC

36 426 670 Product version up to 8/24/2020

Spare parts list

Number	Item Number	Designation	Number of units	Lead time
26	09 24 04 257 90	nut	2.00	2
11	09 30 30 159-33	screw	1.00	30
1	90 90 03 163 00 90	diverter	1.00	2
16	09 28 10 190 90	regulator	1.00	2
23	90 30 01 190 00 90	disc	1.00	2
2	09 12 12 053-33	base	1.00	30
27	90 15 02 013 00 90	cartridge	1.00	2
6	09 20 67 006-33	handle	1.00	30
12	09 30 30 160-33	screw	1.00	30
5	90 12 12 002 00 90	fixing cap	1.00	2
22	09 30 01 296 90	disc	1.00	2
9	90 16 02 027 00 90	spring	1.00	2
18	09 12 12 051-33	base	1.00	30
20	09 11 02 263-33	plate	1.00	60
7	04 17 33 006 00-33	handle	1.00	60
15	09 12 12 054 90	base	1.00	2
28	09 28 10 189 90	regulator	1.00	2
21	09 30 30 157 90	screw	4.00	2
19	09 31 11 134 90	pin	1.00	2
10	09 20 33 006-33	handle	1.00	30
25	90 18 40 077 01 90	spindle	2.00	2
3	04 29 06 111 01-00	spindle	1.00	10
13	90 30 30 124 00 90	screw	1.00	2
4	90 23 30 023 00 90	nut	2.00	2
24	90 23 01 124 00 90	sleeve	2.00	2
14	90 12 12 052 00 90	base	1.00	2
17	04 29 06 024 01-00	spindle	1.00	10
8	90 21 33 011 00-13	handle	1.00	2