

## TARA Concealed thermostat with two-way diverter - Brushed Chrome

TARA

36 426 892 Product version from 5/1/2022



- Diverter with integrated volume control
- Cover plate Ø 5-7/8"
- Temperature control handle with safety lock at 100 °F/ 38°C
- Max. temperature can be set on the trim
- single flow function only

**(ADA)**

(ADA)

	Brushed Chrome	36 426 892-93 0010
	Chrome	36 426 892-00 0010
	Brushed Platinum	36 426 892-06 0010
	Platinum	36 426 892-08 0010
	Brushed Durabrass (23kt Gold)	36 426 892-28 0010
	Matte Black	36 426 892-33 0010
	Brushed Dark Brass	36 426 892-39 0010
	Brushed Bronze	36 426 892-42 0010
	Brushed Champagne (22kt Gold)	36 426 892-46 0010
	Champagne (22kt Gold)	36 426 892-47 0010
	Brushed Dark Platinum	36 426 892-99 0010

### Required article



#### Concealed thermostat for one- and two-way outlets -

- Max. rough in depth 5-3/8"
- Min. rough in depth 3-1/8"

35 426 970-90 0010

### Recommended article



#### xGRID Mounting bracket for drywall construction -

12 340 970 90

### Required article



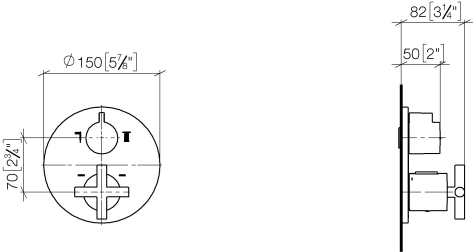
**xGRID Installation track 21.85" -** 12 360 970 90

TARA Concealed thermostat with two-way diverter - Brushed Chrome

TARA

36 426 892    Product version from 5/1/2022

mm [inches]



Codes & Standards

ADA	ASME A112.18.1	California Energy Commission (CEC)	cUPC
-----	----------------	------------------------------------	------

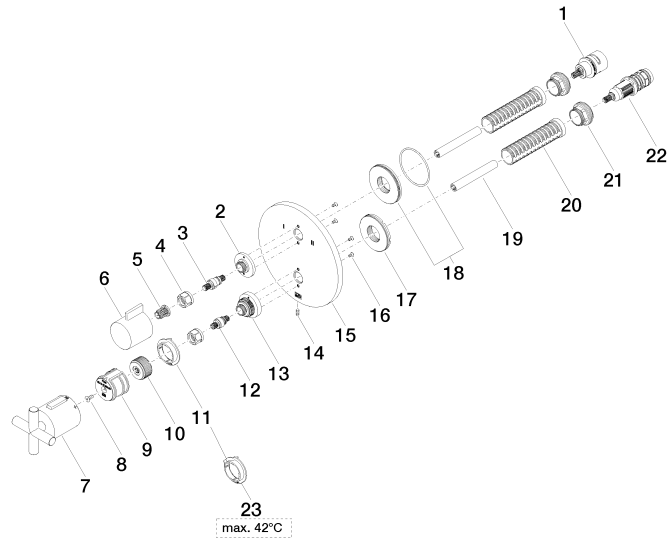
Certificates and sustainability

IAPMO\_4976 (

## TARA Concealed thermostat with two-way diverter - Brushed Chrome

TARA

36 426 892 Product version from 5/1/2022



## Spare parts list

Number	Item Number	Designation	Number of units	Lead time
16	09 30 30 157 90	screw	4.00	2
15	09 11 02 266-93	plate	1.00	20
18	90 30 01 190 00 90	disc	1.00	2
21	09 24 04 257 90	nut	2.00	2
23	09 28 10 189 90	regulator	1.00	2
13	09 12 12 051-93	base	1.00	20
17	09 30 01 296 90	disc	1.00	2
14	09 31 11 134 90	pin	1.00	2
2	09 12 12 053-93	base	1.00	20
22	90 15 02 013 00 90	cartridge	1.00	2
7	90 17 33 022 00-93	handle	1.00	20
5	90 12 12 002 00 90	fixing cap	1.00	2
11	09 28 10 190 90	regulator	1.00	2
6	09 20 67 006-93	handle	1.00	20
10	09 12 12 054 90	base	1.00	2
1	90 90 03 163 00 90	diverter	1.00	2
9	90 12 12 052 00 90	base	1.00	2
3	04 29 06 111 01-00	spindle	1.00	10
12	04 29 06 024 01-00	spindle	1.00	10
8	90 30 30 124 00 90	screw	1.00	2
19	90 23 01 124 00 90	sleeve	2.00	2
20	90 18 40 077 01 90	spindle	2.00	2
4	90 23 30 023 00 90	nut	2.00	2