



LULU Concealed thermostat with three-way diverter - Brushed Platinum

LULU


36 428 710 Product version from 3/13/2017 to 3/21/2019




- Diverter with integrated volume control
 - Cover plate 5-7/8" x 3-1/2"
 - Temperature control handle with safety lock at 100 °F/ 38°C
 - Max. temperature can be set on the trim
 - single flow function only
- (ADA)**
- (ADA)

	Brushed Platinum	36 428 710-06 0010
	Chrome	36 428 710-00 0010


Required article

	Concealed thermostat for three-way outlets - <ul style="list-style-type: none">•Max. rough in depth 5-3/8"•Min. rough in depth 3-1/8"	35 428 970-90 0010
---	---	--------------------

Required article

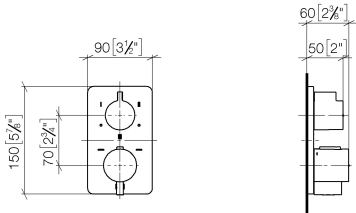
	xGRID Installation track 21.85" -	12 360 970 90
--	--	---------------

Recommended article

	xGRID Mounting bracket for drywall construction -	12 340 970 90
---	--	---------------

36 428 710 Product version from 3/13/2017 to 3/21/2019

mm [inches]

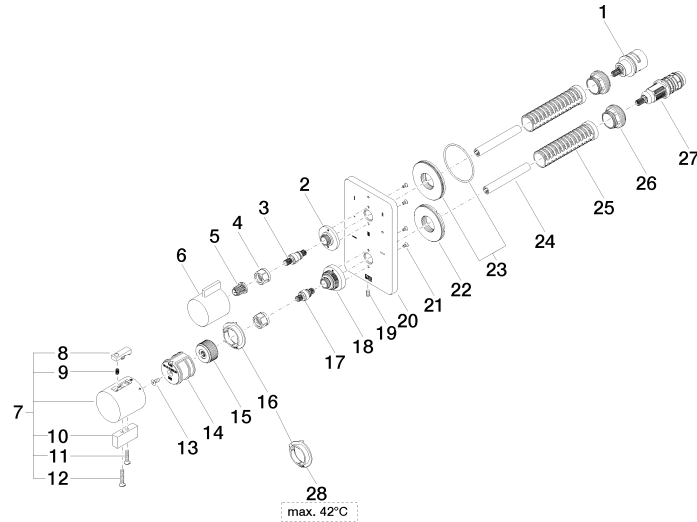


Codes & Standards

ADA	ASME A112.18.1	California Energy Commission (CEC)	cUPC
-----	----------------	------------------------------------	------

Certificates and sustainability

IAPMO_4976 (



Spare parts list

Number	Item Number	Designation	Number of units	Lead time
6	09 20 67 006-06	handle	1.00	10
7	04 17 33 006 00-06	handle	1.00	60
11	09 30 30 159-06	screw	1.00	10
21	09 30 30 157 90	screw	4.00	2
22	09 30 01 296 90	disc	1.00	2
20	09 11 02 317-06	plate	1.00	10
18	09 12 12 051-06	base	1.00	10
10	09 20 33 006-06	handle	1.00	10
12	09 30 30 160-06	screw	1.00	10
1	90 90 03 170 00 90	diverter	1.00	2
28	09 28 10 189 90	regulator	1.00	2
27	90 15 02 013 00 90	cartridge	1.00	2
5	90 12 12 002 00 90	fixing cap	1.00	2
19	09 31 11 134 90	pin	1.00	2
26	09 24 04 257 90	nut	2.00	2
16	09 28 10 190 90	regulator	1.00	2
2	09 12 12 053-06	base	1.00	10
15	09 12 12 054 90	base	1.00	2
23	90 30 01 190 00 90	disc	1.00	2
9	90 16 02 027 00 90	spring	1.00	2
24	90 23 01 124 00 90	sleeve	2.00	2
13	90 30 30 124 00 90	screw	1.00	2
25	90 18 40 077 01 90	spindle	2.00	2
3	04 29 06 111 01-00	spindle	1.00	10
17	04 29 06 024 01-00	spindle	1.00	10
14	90 12 12 052 00 90	base	1.00	2
4	90 23 30 023 00 90	nut	2.00	2
8	90 21 33 011 00-13	handle	1.00	2