


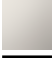


VAIA Concealed thermostat with three-way diverter - Brushed Champagne (22kt Gold)

36 428 809



- Diverter with integrated volume control
  - Cover plate Ø 5-7/8"
  - Temperature control handle with safety lock at 100 °F/ 38°C
  - Max. temperature can be set on the trim
  - single flow function only
- (ADA)**
- (ADA)

	Brushed Champagne (22kt Gold)	36 428 809-46 0010
	Chrome	36 428 809-00 0010
	Brushed Platinum	36 428 809-06 0010
	Platinum	36 428 809-08 0010
	Dark Chrome	36 428 809-19 0010
	Brushed Durabronze (23kt Gold)	36 428 809-28 0010
	Brushed Bronze	36 428 809-42 0010
	Champagne (22kt Gold)	36 428 809-47 0010
	Brushed Dark Platinum	36 428 809-99 0010

Required article



- Concealed thermostat for three-way outlets -** 35 428 970-90 0010
- Max. rough in depth "
  - Min. rough in depth "

Required article

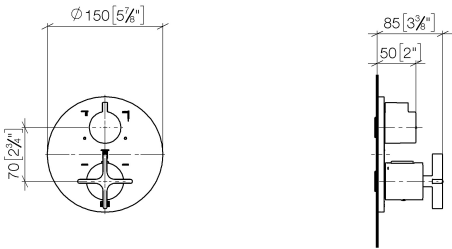


- xGRID Installation track 21.85" -** 12 360 970 90

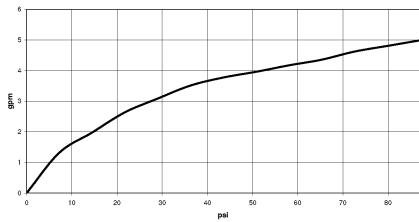


VAIA Concealed thermostat with three-way diverter - Brushed Champagne  
(22kt Gold)

36 428 809  
mm [inches]



Flow rate chart



Codes & Standards

ASME A112.18.1      cUPC



## VAIA Concealed thermostat with three-way diverter - Brushed Champagne (22kt Gold)

---

36 428 809

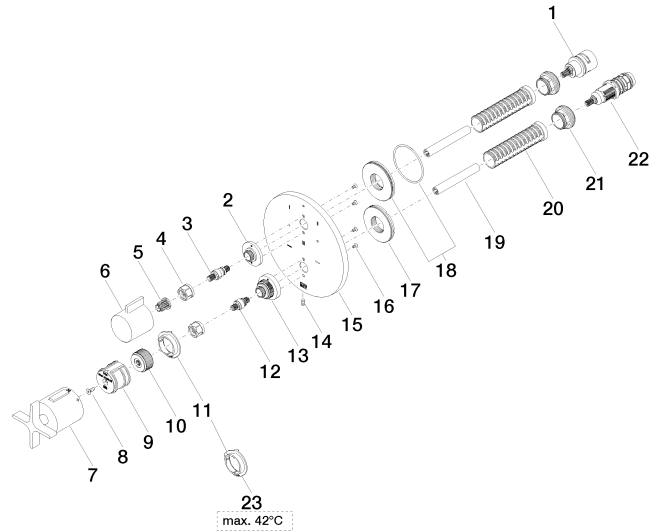
Certificates

---

IAPMO\_4976 (

## VAIA Concealed thermostat with three-way diverter - Brushed Champagne (22kt Gold)

36 428 809





## VAIA Concealed thermostat with three-way diverter - Brushed Champagne (22kt Gold)

36 428 809

### Spare parts list

Number	Item Number	Designation	Number of units	Lead time
1	90 90 03 170 00 90	diverter	1	2
2	09 12 12 053-46	base	1	60
3	04 29 06 111 01-00	spindle	1	10
4	90 23 30 023 00 90	nut	2	2
5	90 12 12 002 00 90	fixing cap	1	2
6	09 20 67 006-46	handle	1	30
7	90 17 33 032 00-46	handle	1	30
8	90 30 30 124 00 90	screw	1	2
9	90 12 12 052 00 90	base	1	2
10	09 12 12 054 90	base	1	2
11	09 28 10 190 90	regulator	1	2
12	04 29 06 024 01-00	spindle	1	10
13	09 12 12 051-46	base	1	60
14	09 31 11 134 90	pin	1	2
15	09 11 02 270-46	plate	1	60
16	09 30 30 157 90	screw	4	2
17	09 30 01 296 90	disc	1	2
18	90 30 01 190 00 90	disc	1	2
19	90 23 01 124 00 90	sleeve	2	2
20	90 18 40 077 01 90	spindle	2	2
21	09 24 04 257 90	nut	2	2
22	90 15 02 013 00 90	cartridge	1	2
23	09 28 10 189 90	regulator	1	2