

LISSÉ Concealed thermostat with three-way diverter - Brushed Platinum


LISSÉ

36 428 845    Product version from 3/13/2017 to 3/21/2019




- Diverter with integrated volume control
  - Cover plate 5-7/8" x 3-1/2"
  - Max. temperature can be set on the trim
  - Temperature control handle with safety lock at 100 °F/ 38°C
  - single flow function only


(ADA)

	Brushed Platinum	36 428 845-06 0010
	Chrome	36 428 845-00 0010
	Dark Chrome	36 428 845-19 0010
	Brushed Light Gold	36 428 845-27 0010
	Matte Black	36 428 845-33 0010
	Brushed Chrome	36 428 845-93 0010
	Brushed Dark Platinum	36 428 845-99 0010


Required article

	<div>Concealed thermostat for three-way outlets -</div> <div> <ul style="list-style-type: none"> <li>•Max. rough in depth 5-3/8"</li> <li>•Min. rough in depth 3-1/8"</li> </ul> </div>	35 428 970-90 0010
---	---	--------------------

Required article

	xGRID Installation track 21.85" -	12 360 970 90
---	-----------------------------------	---------------

Recommended article

	xGRID Mounting bracket for drywall construction -	12 340 970 90
---	---	---------------

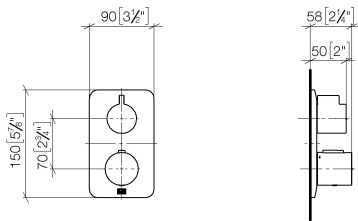


LISSE Concealed thermostat with three-way diverter - Brushed Platinum

LISSE

36 428 845 Product version from 3/13/2017 to 3/21/2019

mm [inches]

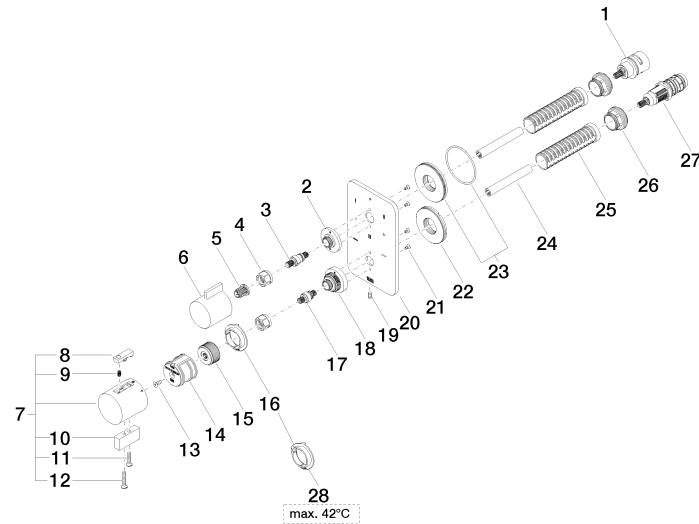


Codes & Standards

ADA	ASME A112.18.1	California Energy Commission (CEC)	cUPC
-----	----------------	------------------------------------	------

Certificates and sustainability

IAPMO\_4976 (



## Spare parts list

Number	Item Number	Designation	Number of units	Lead time
2	09 12 12 053-06	base	1.00	10
23	90 30 01 190 00 90	disc	1.00	2
27	90 15 02 013 00 90	cartridge	1.00	2
15	09 12 12 054 90	base	1.00	2
16	09 28 10 190 90	regulator	1.00	2
22	09 30 01 296 90	disc	1.00	2
26	09 24 04 257 90	nut	2.00	2
12	09 30 30 160-06	screw	1.00	10
7	04 17 33 006 00-06	handle	1.00	60
9	90 16 02 027 00 90	spring	1.00	2
11	09 30 30 159-06	screw	1.00	10
21	09 30 30 157 90	screw	4.00	2
5	90 12 12 002 00 90	fixing cap	1.00	2
28	09 28 10 189 90	regulator	1.00	2
10	09 20 33 006-06	handle	1.00	10
6	09 20 67 006-06	handle	1.00	10
18	09 12 12 051-06	base	1.00	10
19	09 31 11 134 90	pin	1.00	2
1	90 90 03 170 00 90	diverter	1.00	2
20	09 11 02 319-06	plate	1.00	10
17	04 29 06 024 01-00	spindle	1.00	10
25	90 18 40 077 01 90	spindle	2.00	2
14	90 12 12 052 00 90	base	1.00	2
13	90 30 30 124 00 90	screw	1.00	2
24	90 23 01 124 00 90	sleeve	2.00	2
3	04 29 06 111 01-00	spindle	1.00	10
4	90 23 30 023 00 90	nut	2.00	2
8	90 21 33 011 00-13	handle	1.00	2