

WATER FAN horizontal Body spray - Brushed Dark Platinum


36 512 979 Product version from 10/1/2023




- Pressurized cascade stream
- Horizontal jet
- Cover plate 9-1/2" x 2-3/8"
- Adjustable jet
- 1/2" connection
- Water flow rate limited to max. 1.8 gpm
- This product reduces water consumption by 28% (compared to requirements of EPA '92)
- This product contributes to meeting the requirements of the LEED® Green Building Rating
- This product can help a building meet the requirements of Green Building Rating Systems, e.g. LEED®, BREEAM®, DGNB

	Brushed Dark Platinum	36 512 979-99 0010
	Chrome	36 512 979-00 0010
	Brushed Platinum	36 512 979-06 0010
	Platinum	36 512 979-08 0010
	Dark Chrome	36 512 979-19 0010
	Light gold	36 512 979-26 0010
	Brushed Light Gold	36 512 979-27 0010
	Brushed Durabrass (23kt Gold)	36 512 979-28 0010
	Matte Black	36 512 979-33 0010
	Brushed Bronze	36 512 979-42 0010
	Brushed Champagne (22kt Gold)	36 512 979-46 0010
	Champagne (22kt Gold)	36 512 979-47 0010
	Brushed Chrome	36 512 979-93 0010


Required article

	Rough - •Max. rough in depth " •Min. rough in depth "	35 206 970-90 0010
---	--	--------------------

Recommended article

	xGRID Mounting bracket for drywall construction -	12 340 970 90
---	--	---------------

Required article

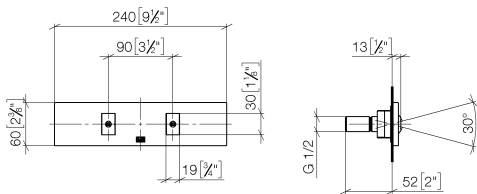
	xGRID Installation track 21.85" -	12 360 970 90
---	--	---------------



WATER FAN horizontal Body spray - Brushed Dark Platinum

36 512 979 Product version from 10/1/2023

mm [inches]



Flow rate chart



Codes & Standards

ASME A112.18.1	ASME A112.18.1/CSA B125.1	California Energy Commission (CEC)	cUPC
----------------	---------------------------------	--	------



WATER FAN horizontal Body spray - Brushed Dark Platinum

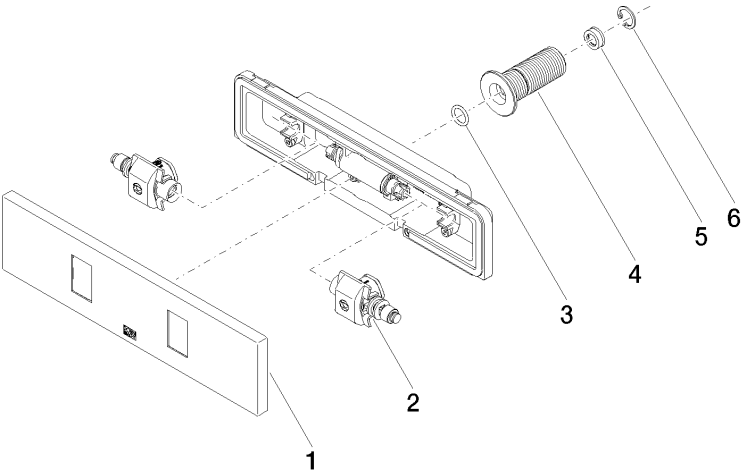
36 512 979 Product version from 10/1/2023

Certificates

IAPMO_4976 (

WATER FAN horizontal Body spray - Brushed Dark Platinum

36 512 979 Product version from 10/1/2023



Spare parts list

Number	Item Number	Designation	Number of units	Lead time
1	90 27 99 002 00-99	insert	1	20
2	90 31 10 012 00 90	insert	1	2
3	09 14 10 003 90	seal	1	2
4	09 24 05 015 90	nipple	1	2
5	09 23 01 165 90	flow reducer	1	2
6	09 16 01 014 90	ring	1	2