

WATER CURVE Body spray - Light gold

36 514 979 Product version from 10/1/2023



- AQUAPRESSURE FLOW, max. flow rate 1.8 gpm (at 3 bar)
- Adjustable jet
- Cover plate 4-3/4" x 2-3/8"
- 1/2" connection
- This product reduces water consumption by 28% (compared to requirements of EPAct '92)
- This product contributes to meeting the requirements of the LEED® Green Building Rating
- This product can help a building meet the requirements of Green Building Rating Systems, e.g. LEED®, BREEAM®, DGNB

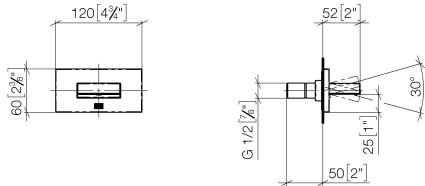
| | | |
|---|-------------------------------|--------------------|
|  | Light gold | 36 514 979-26 0010 |
|  | Chrome | 36 514 979-00 0010 |
|  | Brushed Platinum | 36 514 979-06 0010 |
|  | Platinum | 36 514 979-08 0010 |
|  | Dark Chrome | 36 514 979-19 0010 |
|  | Brushed Light Gold | 36 514 979-27 0010 |
|  | Brushed Durabrass (23kt Gold) | 36 514 979-28 0010 |
|  | Matte Black | 36 514 979-33 0010 |
|  | Brushed Bronze | 36 514 979-42 0010 |
|  | Brushed Champagne (22kt Gold) | 36 514 979-46 0010 |
|  | Champagne (22kt Gold) | 36 514 979-47 0010 |
|  | Brushed Chrome | 36 514 979-93 0010 |
|  | Brushed Dark Platinum | 36 514 979-99 0010 |



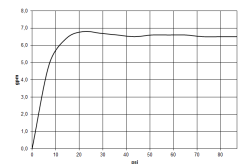
WATER CURVE Body spray - Light gold

36 514 979 Product version from 10/1/2023

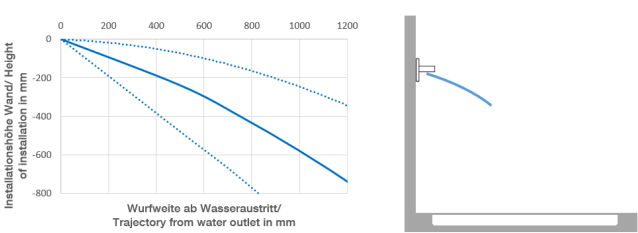
mm [inches]



Flow rate chart



Trajectory length diagram



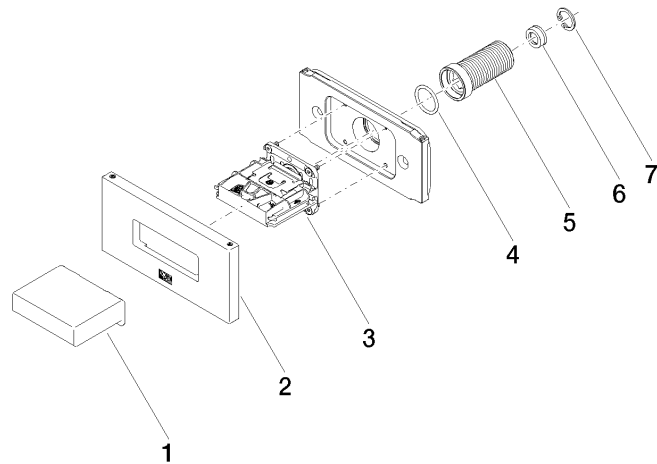
Codes & Standards

| | |
|---------------------------------|--|
| ASME A112.18.1/CSA B125.1 | California Energy Commission (CEC) |
|---------------------------------|--|

WATER CURVE Body spray - Light gold

36 514 979 Product version from 10/1/2023

Parts for other
finishes can be found
here: [Chrome](#)



Spare parts list

| Number | Item Number | Designation | Number of units | Lead time |
|--------|--------------------|--------------|-----------------|-----------|
| 1 | 09 17 01 230-26 | casing | 1 | 60 |
| 2 | 90 27 97 041 00-26 | rosette | 1 | 30 |
| 3 | 90 29 03 088 00 90 | insert | 1 | 2 |
| 4 | 90 14 10 010 00 90 | seal | 1 | 2 |
| 5 | 09 24 04 336 90 | nipple | 1 | 2 |
| 6 | 09 23 01 165 90 | flow reducer | 1 | 2 |
| 7 | 09 16 01 014 90 | ring | 1 | 2 |