

WATER CURVE Body spray - Brushed Durabrass (23kt Gold)
SERIES-VARIOUS

36 514 979    Product version from 10/1/2023



- AQUAPRESSURE FLOW, max. flow rate 1.8 gpm (at 3 bar)
- Adjustable jet
- Function from: gpm

**Technical data:**

- Cover plate 4-3/4" x 2-3/8"
- 1/2" connection

**Notes:**

- This product reduces water consumption by 28% (compared to requirements of EPAct '92)
- This product can help a building meet the requirements of Green Building Rating Systems, e.g. LEED®, BREEAM®, DGNB
- This product contributes to meeting the requirements of the LEED® Green Building Rating

	Brushed Durabrass (23kt Gold)	36 514 979-28 0010
	Chrome	36 514 979-00 0010
	Brushed Platinum	36 514 979-06 0010
	Platinum	36 514 979-08 0010
	Dark Chrome	36 514 979-19 0010
	Light gold	36 514 979-26 0010
	Brushed Light Gold	36 514 979-27 0010
	Matte Black	36 514 979-33 0010
	Brushed Dark Brass	36 514 979-39 0010
	Brushed Bronze	36 514 979-42 0010
	Brushed Champagne (22kt Gold)	36 514 979-46 0010
	Champagne (22kt Gold)	36 514 979-47 0010
	Brushed Chrome	36 514 979-93 0010
	Brushed Dark Platinum	36 514 979-99 0010

**Required article**

Rough-in adapter -
35 080 970-90 0010



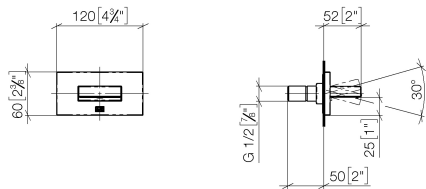


WATER CURVE Body spray - Brushed Durabronz (23kt Gold)

SERIES-VARIOUS

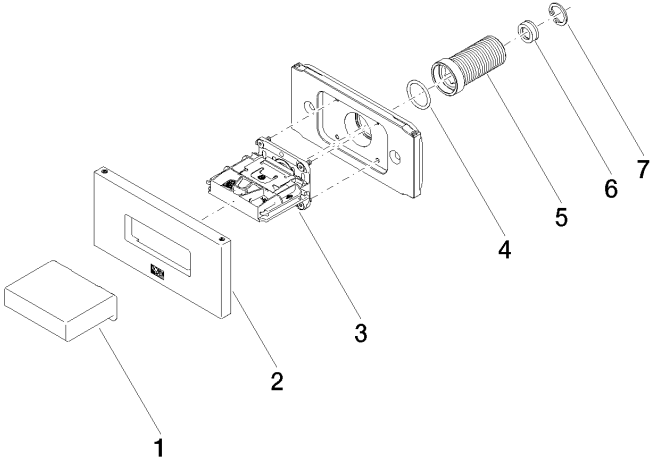
36 514 979 Product version from 10/1/2023

mm [inches]



Codes & Standards

California Energy  
Commission  
(CEC)



Spare parts list

Number	Item Number	Designation	Number of units	Lead time
	3 90 29 03 088 00 90	insert	1.00	2
	5 09 24 04 336 90	nipple	1.00	2
	1 09 17 01 230-28	casing	1.00	20
	6 09 23 01 165 90	flow reducer	1.00	2
	2 90 27 97 041 00-28	rosette	1.00	20
	7 09 16 01 014 90	ring	1.00	2
	4 90 14 10 010 00 90	seal	1.00	2