

WATER POINTS Body spray FlowReduce - Platinum

36 515 979 Product version from 4/1/2024



- HORIZONTAL RAIN, flow rate max. 1.6 gpm (at 3 bar)
 - Descaling system
 - Cover plate 4-3/4" x 4-3/4"
 - This product can help a building meet the requirements of Green Building Rating Systems, e.g. LEED®, BREEAM®, DGNB
- Additional flow restrictor (2.2 gpm) included to extend spray projection.**
- Additional flow restrictor (2.2 gpm) included to extend spray projection.

| | | |
|---|-------------------------------|---------------|
|  | Platinum | 36 515 979-08 |
|  | Chrome | 36 515 979-00 |
|  | Brushed Platinum | 36 515 979-06 |
|  | Dark Chrome | 36 515 979-19 |
|  | Light gold | 36 515 979-26 |
|  | Brushed Light Gold | 36 515 979-27 |
|  | Brushed Durabrass (23kt Gold) | 36 515 979-28 |
|  | Matte Black | 36 515 979-33 |
|  | Brushed Bronze | 36 515 979-42 |
|  | Brushed Champagne (22kt Gold) | 36 515 979-46 |
|  | Champagne (22kt Gold) | 36 515 979-47 |
|  | Brushed Chrome | 36 515 979-93 |
|  | Brushed Dark Platinum | 36 515 979-99 |

Required article



WATER POINTS Adapter plate - 12 305 970 90

- Adapter plate for mounting concealed rough parts 35 205 970 90 on the xGRID installation track.

Required article



Rough - 35 205 970-90 0010

- Max. rough in depth "
- Min. rough in depth "

Recommended article



xGRID Mounting bracket for drywall construction - 12 340 970 90

Required article

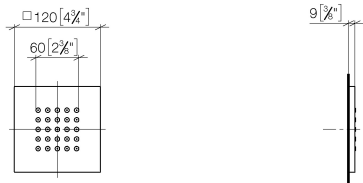


xGRID Installation track 21.85" - 12 360 970 90

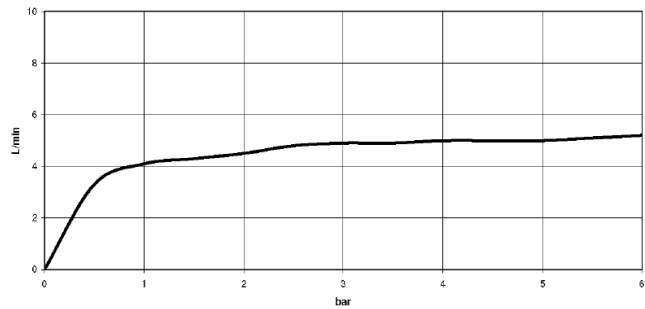
WATER POINTS Body spray FlowReduce - Platinum

36 515 979 Product version from 4/1/2024

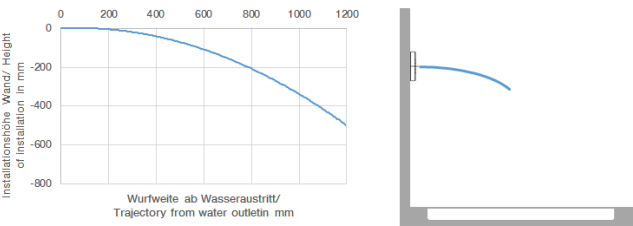
mm [inches]



Flow rate chart



Trajectory length diagram



Codes & Standards

| | | | |
|----------------|---------------------------|------------------------------------|-----------------------------|
| ASME A112.18.1 | ASME A112.18.1/CSA B125.1 | California Energy Commission (CEC) | cUPC |
| DIN 4109 | ISO 3822 | Scottish Water Byelaws | UK Water Supply Regulations |

Ü-Zeichen



WATER POINTS Body spray FlowReduce - Platinum

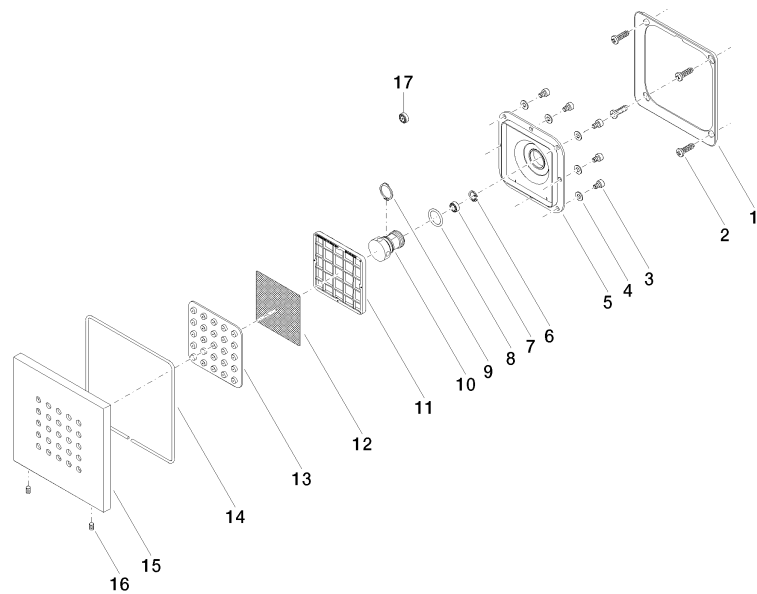
36 515 979 Product version from 4/1/2024

Certificates

LGA_18 WRAS_1304 IAPMO_4976 (

WATER POINTS Body spray FlowReduce - Platinum

36 515 979 Product version from 4/1/2024



Spare parts list

| Number | Item Number | Designation | Number of units | Lead time |
|--------|--------------------|--------------|-----------------|-----------|
| 1 | 09 28 01 024 90 | holder | 1 | 2 |
| 2 | 09 30 31 022 90 | screw | 4 | 2 |
| 3 | 09 30 30 031 90 | screw | 8 | 2 |
| 4 | 09 30 11 024 90 | disc | 8 | 2 |
| 5 | 09 12 12 205 90 | base | 1 | 2 |
| 6 | 09 16 01 016 90 | ring | 1 | 2 |
| 7 | 90 23 01 032 00 90 | flow reducer | 1 | 2 |
| 8 | 09 14 10 130 90 | seal | 1 | 2 |
| 9 | 09 16 01 017 90 | ring | 1 | 2 |
| 10 | 09 17 11 146 90 | distributor | 1 | 60 |
| 11 | 09 17 97 057 90 | holder | 1 | 2 |
| 12 | 09 29 30 043 90 | insert | 1 | 2 |
| 13 | 09 12 01 075 90 | insert | 1 | 2 |
| 14 | 09 14 03 117 90 | seal | 1 | 2 |
| 15 | 09 27 98 004-08 | rosette | 1 | 40 |
| 16 | 09 31 11 048 90 | pin | 1 | 2 |
| 17 | 09 23 01 052 90 | flow reducer | 1 | 2 |