



Volume Control counter-clockwise closing hot 1/2" - Brushed Platinum

SERIES SPECIFIC

36 607 742 Product version from 7/1/2023



- Without flange
- Handle Ø 2-3/8"
- with marking for hot
- Ceramic disc cartridge

	Brushed Platinum	36 607 742-06
	Chrome	36 607 742-00
	Dark Chrome	36 607 742-19
	Brushed Durabrass (23kt Gold)	36 607 742-28
	Matte Black	36 607 742-33
	Brushed Bronze	36 607 742-42
	Brushed Champagne (22kt Gold)	36 607 742-46
	Champagne (22kt Gold)	36 607 742-47
	Brushed Dark Platinum	36 607 742-99

Required article

	Rough for volume control 1/2" -	35 607 970-90
	•Max. rough in depth 5-3/4"	0010
	•Min. rough in depth 3-3/8"	



Volume Control counter-clockwise closing hot 1/2" - Brushed Platinum

SERIES SPECIFIC

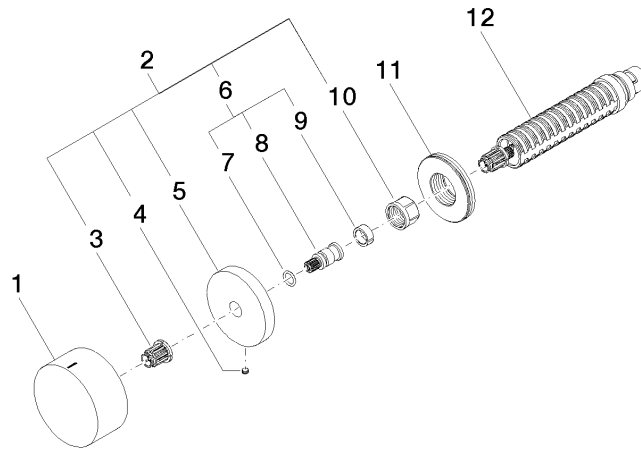
36 607 742 Product version from 7/1/2023

mm [inches]



Codes & Standards			
ASME A112.18.1	cUPC	DIN 4109	EN 200
ISO 3822	Scottish Water Byelaws	UK Water Supply Regulations	Ü-Zeichen

Certificates and sustainability				
DVGW_DW-6501DN0	LGA_38	LGA_29	WRAS_2010	LGA_29
IAPMO_4976 (



Spare parts list

Number	Item Number	Designation	Number of units	Lead time
2	04 27 74 004 00-06	rosette	1.00	10
11	09 30 01 107 90	sleeve	1.00	2
8	09 29 06 020-06	spindle	1.00	-
Spare part can no longer be ordered, please order the replacement item				
5	09 27 74 004-06	rosette	1.00	10
12	90 90 03 142 00 90	top	1.00	2
3	90 12 12 002 00 90	fixing cap	1.00	2
4	09 31 11 055 90	pin	1.00	2
1	09 20 74 021-06	handle (hot)	1.00	10
6	04 29 06 020 00-00	spindle	1.00	10
9	90 14 15 020 03 90	ring	1.00	2
7	90 14 10 060 00 90	seal	1.00	2
10	90 23 30 023 00 90	nut	1.00	2