






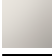





VAIA Volume Control clockwise-closing 1/2" - Brushed Bronze

36 607 819



- Flange diameter 2-3/8"
- Ceramic disc cartridge

(ADA)

	Brushed Bronze	36 607 819-42
	Chrome	36 607 819-00
	Brushed Platinum	36 607 819-06
	Platinum	36 607 819-08
	Dark Chrome	36 607 819-19
	Brushed Durabrass (23kt Gold)	36 607 819-28
	Brushed Champagne (22kt Gold)	36 607 819-46
	Champagne (22kt Gold)	36 607 819-47
	Brushed Dark Platinum	36 607 819-99

VAIA Volume Control clockwise-closing 1/2" - Brushed Bronze

36 607 819

mm [inches]

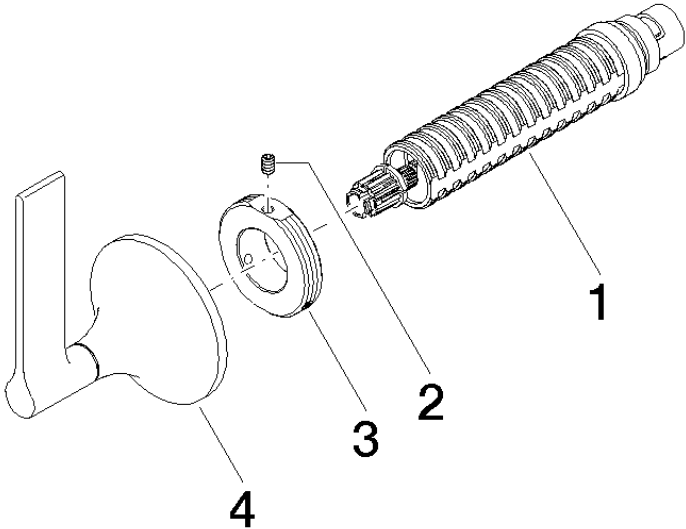


Codes & Standards				
ADA	ASME A112.18.1	ASME A112.18.1/CSA B125.1	cUPC	
DIN 4109	EN 1111	ISO 3822	Scottish Water Byelaws	
UK Water Supply Regulations	Ü-Zeichen			
Certificates				
WRAS_2011	LGA_29	WRAS_2010	DVGW_DW-6512DN0	IAPMO_4976 (

VAIA Volume Control clockwise-closing 1/2" - Brushed Bronze

36 607 819

Parts for other  
finishes can be found  
here: [Chrome](#)



Spare parts list

Number	Item Number	Designation	Number of units	Lead time
1	90 90 03 143 00 90	top	1	2
2	09 31 11 008 90	pin	1	2
3	09 21 02 163 90	disc	1	2
4	90 20 80 015 00-42	handle	1	30