



TARA Volume Control clockwise-closing 1/2" - Brushed Dark Brass

TARA

36 607 892    Product version from 10/27/2020

- Flange diameter 2-1/8"
- Ceramic disc cartridge

(ADA)



|   |                               |               |
|---|-------------------------------|---------------|
|    | Brushed Dark Brass            | 36 607 892-39 |
|    | Chrome                        | 36 607 892-00 |
|    | Brushed Platinum              | 36 607 892-06 |
|    | Platinum                      | 36 607 892-08 |
|    | Dark Chrome                   | 36 607 892-19 |
|    | Brushed Durabrass (23kt Gold) | 36 607 892-28 |
|    | Matte Black                   | 36 607 892-33 |
|    | Brushed Bronze                | 36 607 892-42 |
|    | Brushed Champagne (22kt Gold) | 36 607 892-46 |
|  | Champagne (22kt Gold)         | 36 607 892-47 |
|  | Brushed Chrome                | 36 607 892-93 |
|  | Brushed Dark Platinum         | 36 607 892-99 |

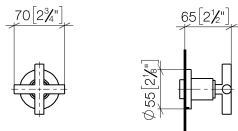


TARA Volume Control clockwise-closing 1/2" - Brushed Dark Brass

TARA

36 607 892    Product version from 10/27/2020

mm [inches]



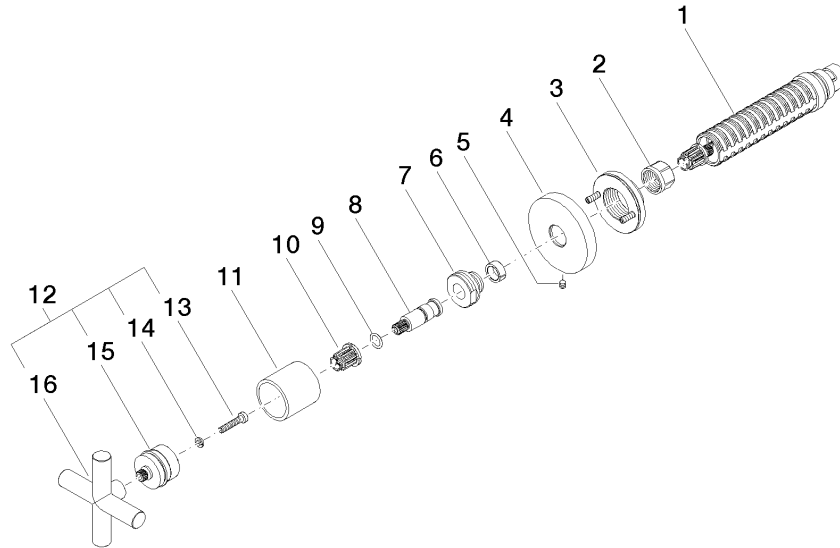
Codes & Standards

|                        |                             |           |          |
|------------------------|-----------------------------|-----------|----------|
| ADA                    | DIN 4109                    | EN 1111   | ISO 3822 |
| Scottish Water Byelaws | UK Water Supply Regulations | Ü-Zeichen |          |

Certificates and sustainability

|           |        |           |                 |
|-----------|--------|-----------|-----------------|
| WRAS_2011 | LGA_29 | WRAS_2010 | DVGW_DW-6512DN0 |
|-----------|--------|-----------|-----------------|

Parts for other  
finishes can be found  
here: [Chrome](#)



## Spare parts list

| Number | Item Number        | Designation | Number of units | Lead time |
|--------|--------------------|-------------|-----------------|-----------|
| 15     | 90 12 12 007 00-39 | base        | 1.00            | 30        |
| 4      | 09 27 89 108-39    | rosette     | 1.00            | 60        |
| 8      | 09 29 06 022 90    | spindle     | 1.00            | 2         |
| 6      | 90 14 15 020 03 90 | ring        | 1.00            | 2         |
| 2      | 90 23 30 023 00 90 | nut         | 1.00            | 2         |
| 5      | 90 31 11 007 00 90 | pin         | 1.00            | 2         |
| 16     | 09 20 89 010-39    | handle      | 1.00            | 60        |
| 10     | 90 12 12 002 00 90 | fixing cap  | 1.00            | 2         |
| 1      | 90 90 03 143 00 90 | top         | 1.00            | 2         |
| 11     | 09 21 02 144-39    | sleeve      | 1.00            | 60        |
| 9      | 90 14 10 060 00 90 | seal        | 1.00            | 2         |
| 13     | 90 30 30 075 00 90 | screw       | 1.00            | 2         |
| 3      | 90 21 02 108 00 90 | disc        | 1.00            | 2         |
| 14     | 90 30 11 029 00 90 | disc        | 1.00            | 2         |
| 7      | 09 24 05 002 90    | nipple      | 1.00            | 2         |
| 12     | 90 20 89 010 10-39 | handle      | 1.00            | 30        |