



IMO Volume Control counter-clockwise closing 1/2" - Brushed Dark Platinum

IMO

36 607 980 Product version from 6/1/2024



- Flange 2-3/8" x 2-3/8"
- Ceramic disc cartridge

	Brushed Dark Platinum	36 607 980-99
	Chrome	36 607 980-00
	Brushed Platinum	36 607 980-06
	Platinum	36 607 980-08
	Dark Chrome	36 607 980-19
	Brushed Light Gold	36 607 980-27
	Brushed Durabronze (23kt Gold)	36 607 980-28
	Matte Black	36 607 980-33
	Brushed Chrome	36 607 980-93

Required article



- Rough for volume control 1/2" - 35 607 970-90 0010**
- Max. rough in depth 5-3/4"
 - Min. rough in depth 3"



IMO Volume Control counter-clockwise closing 1/2" - Brushed Dark Platinum

IMO

36 607 980 Product version from 6/1/2024

mm [inches]



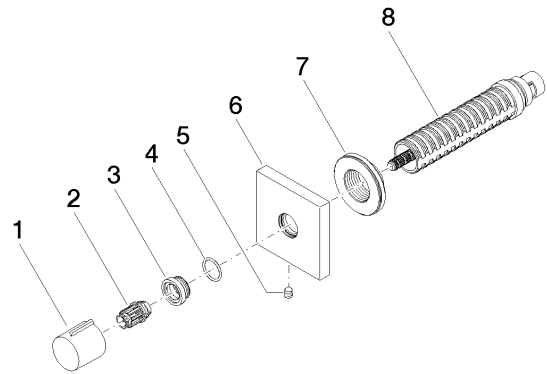
Codes & Standards

ASME A112.18.1	cUPC	DIN 4109	EN 1111
EN 200	ISO 3822	Scottish Water Byelaws	UK Water Supply Regulations

Ü-Zeichen

Certificates and sustainability

DVGW_DW-6501DN0	WRAS_2011	LGA_29	WRAS_2010	DVGW_DW-6512DN0
LGA_29	IAPMO_4976 (



Spare parts list

Number	Item Number	Designation	Number of units	Lead time
3	09 12 12 043-99	base	1.00	20
4	09 14 10 017 90	seal	1.00	2
6	09 27 98 014-99	rosette	1.00	20
8	90 90 03 202 00 90	top	1.00	2
7	09 21 02 151 90	sleeve	1.00	2
1	09 20 98 001-99	handle	1.00	20
2	09 12 12 005 90	fixing cap	1.00	2
5	90 31 11 004 00 90	pin	1.00	2