



SYMETRICS Volume Control counter-clockwise closing 1/2" - Brushed Dark
Platinum

SYMETRICS

36 607 985 Product version from 6/1/2024



- Flange 2-3/8" x 2-3/8"
- Ceramic disc cartridge
(ADA)
- (ADA)

	Brushed Dark Platinum	36 607 985-99
	Chrome	36 607 985-00
	Brushed Platinum	36 607 985-06
	Platinum	36 607 985-08
	Dark Chrome	36 607 985-19
	Brushed Light Gold	36 607 985-27
	Brushed Durabrass (23kt Gold)	36 607 985-28
	Brushed Chrome	36 607 985-93

Required article



- Rough for volume control 1/2" -** 35 607 970-90
•Max. rough in depth 5-3/4" 0010
•Min. rough in depth 3"



SYMETRICS Volume Control counter-clockwise closing 1/2" - Brushed Dark
Platinum

SYMETRICS

36 607 985 Product version from 6/1/2024
mm [inches]

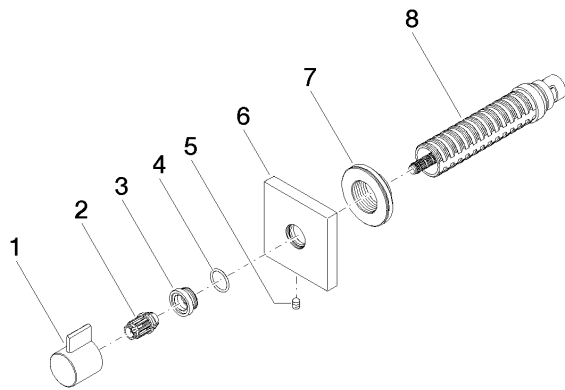


Codes & Standards

ADA	ASME A112.18.1	cUPC	DIN 4109
EN 1111	EN 200	ISO 3822	Scottish Water Byelaws
UK Water Supply Regulations	Ü-Zeichen		

Certificates and sustainability

DVGW_DW- 6501DN0	WRAS_2011	LGA_29	WRAS_2010	DVGW_DW- 6512DN0
LGA_29	IAPMO_4976 (



Spare parts list

Number	Item Number	Designation	Number of units	Lead time
	6 09 27 98 014-99	rosette	1.00	20
	7 09 21 02 151 90	sleeve	1.00	2
	2 09 12 12 005 90	fixing cap	1.00	2
	4 09 14 10 017 90	seal	1.00	2
	8 90 90 03 202 00 90	top	1.00	2
	1 09 20 98 002-99	handle	1.00	20
	3 09 12 12 043-99	base	1.00	20
	5 90 31 11 004 00 90	pin	1.00	2