



SYMETRICS Volume Control counter-clockwise closing 3/4" - Brushed Platinum

SYMETRICS

36 608 985 Product version from 6/1/2024



- Flange 2-3/8" x 2-3/8"
 - Ceramic disc cartridge **(ADA)**
- (ADA)

	Brushed Platinum	36 608 985-06
	Chrome	36 608 985-00
	Platinum	36 608 985-08
	Dark Chrome	36 608 985-19
	Brushed Light Gold	36 608 985-27
	Brushed Durabrass (23kt Gold)	36 608 985-28
	Matte Black	36 608 985-33
	Brushed Chrome	36 608 985-93
	Brushed Dark Platinum	36 608 985-99

Required article



- Rough for volume control 3/4" -**35 608 970-90
- Max. rough in depth 5-3/4"0010
 - Min. rough in depth 3"

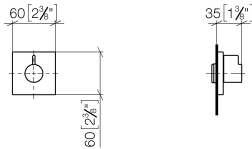


SYMETRICS Volume Control counter-clockwise closing 3/4" - Brushed Platinum

SYMETRICS

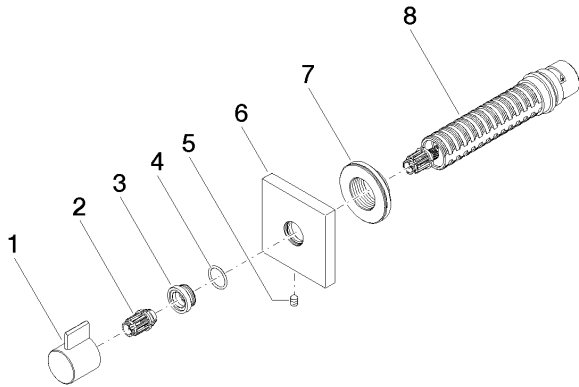
36 608 985 Product version from 6/1/2024

mm [inches]



Codes & Standards			
ADA	ASME A112.18.1	cUPC	Scottish Water Byelaws
UK Water Supply Regulations			

Certificates and sustainability	
WRAS_2010	IAPMO_4976 (



Spare parts list

Number	Item Number	Designation	Number of units	Lead time
	4 09 14 10 017 90	seal	1.00	2
	8 90 90 03 128 00 90	top	1.00	2
	7 09 21 02 151 90	sleeve	1.00	2
	1 09 20 98 002-06	handle	1.00	10
	6 09 27 98 014-06	rosette	1.00	10
	3 09 12 12 043-06	base	1.00	10
	2 09 12 12 005 90	fixing cap	1.00	2
	5 90 31 11 004 00 90	pin	1.00	2