



SYMETRICS Volume Control counter-clockwise closing 3/4" - Brushed Dark Platinum

SYMETRICS

36 608 985 Product version from 6/1/2024



- Flange 2-3/8" x 2-3/8"
- Ceramic disc cartridge (ADA)
- (ADA)

	Brushed Dark Platinum	36 608 985-99
	Chrome	36 608 985-00
	Brushed Platinum	36 608 985-06
	Platinum	36 608 985-08
	Dark Chrome	36 608 985-19
	Brushed Light Gold	36 608 985-27
	Brushed Durabronze (23kt Gold)	36 608 985-28
	Matte Black	36 608 985-33
	Brushed Chrome	36 608 985-93

Required article



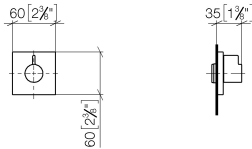
- Rough for volume control 3/4" - 35 608 970-90**
- Max. rough in depth 5-3/4"
 - Min. rough in depth 3"



SYMETRICS Volume Control counter-clockwise closing 3/4" - Brushed Dark
Platinum

SYMETRICS

36 608 985 Product version from 6/1/2024
mm [inches]

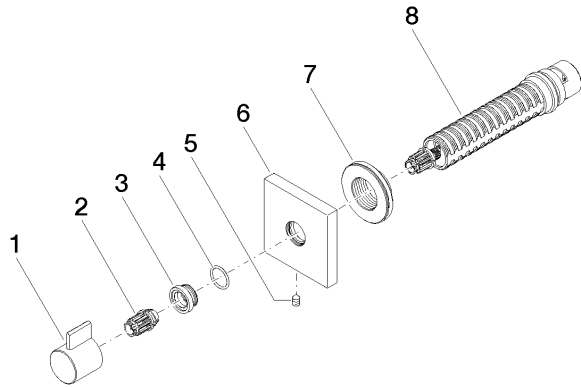


Codes & Standards

ADA	ASME A112.18.1	cUPC	Scottish Water Byelaws
UK Water Supply Regulations			

Certificates and sustainability

WRAS_2010 IAPMO_4976 (



Spare parts list

Number	Item Number	Designation	Number of units	Lead time
	3 09 12 12 043-99	base	1.00	20
	2 09 12 12 005 90	fixing cap	1.00	2
	1 09 20 98 002-99	handle	1.00	20
	8 90 90 03 128 00 90	top	1.00	2
	6 09 27 98 014-99	rosette	1.00	20
	7 09 21 02 151 90	sleeve	1.00	2
	4 09 14 10 017 90	seal	1.00	2
	5 90 31 11 004 00 90	pin	1.00	2