

MEM Wall-mounted three-hole lavatory mixer without drain - Brushed Platinum
MEM

36 702 782



- 5" Projection
- Rigid spout
- Rectangular aerated stream
- Valve hole diameter 1-3/8"
- Spout hole diameter 1-3/8"
- Individual flanges 2-3/8" x 2-3/8"
- Water flow rate limited to max. 1.2 gpm
- lead-free
- This product can help a building meet the requirements of Green Building Rating Systems, e.g. LEED®, BREEAM®, DGNB

(ADA)

(ADA)

	Brushed Platinum	36 702 782-06 0010
	Chrome	36 702 782-00 0010
	Platinum	36 702 782-08 0010
	Brushed Durabrass (23kt Gold)	36 702 782-28 0010
	Brushed Champagne (22kt Gold)	36 702 782-46 0010
	Champagne (22kt Gold)	36 702 782-47 0010
	Brushed Dark Platinum	36 702 782-99 0010

Required article



- Rough for wall-mounted faucet ,
spout in center -
35 700 970-90 0010
- Min. rough in depth 4-3/8"
 - Max. rough in depth 5-7/8"

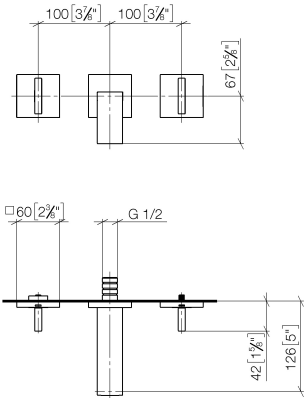
Required article



- Rough for wall-mounted faucet
flexible positioning -
35 720 970-90 0010
- Max. rough in depth 5-7/8"
 - Min. rough in depth 4-3/8"


36 702 782

mm [inches]



Codes & Standards

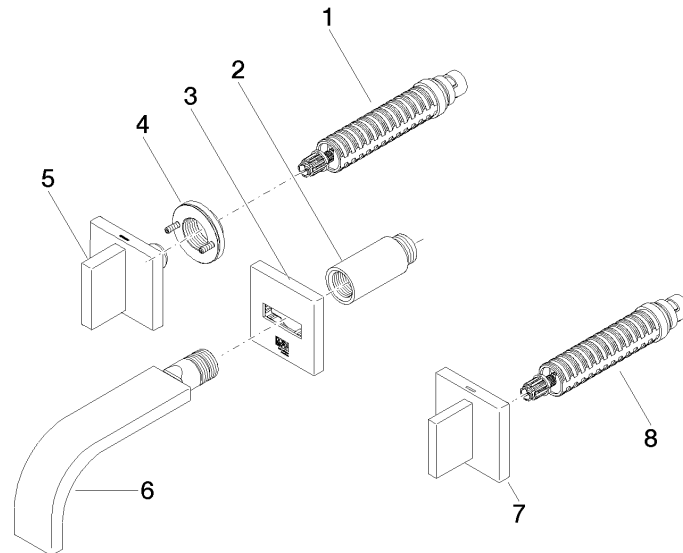
ADA	ASME A112.18.1	California Energy Commission (CEC)	cUPC
EPA WaterSense	NSF372	NSF61	WaterSense



Certificates and sustainability

IAPMO_6397	IAPMO_N-4976	IAPMO_8834	IAPMO_4976 (
------------	--------------	------------	--------------

36 702 782



Spare parts list

Number	Item Number	Designation	Number of units	Lead time
7	90 20 78 002 06-06	handle (cold)	1.00	10
2	09 24 03 081 10 90	extension	1.00	2
6	90 28 22 357 01-06	spout	1.00	10
5	90 20 78 002 07-06	handle (hot)	1.00	10
8	90 90 03 157 00 90	top	1.00	2
3	90 27 78 053 00-06	rosette	1.00	10
1	90 90 03 156 00 90	top	1.00	2
4	90 21 02 108 00 90	disc	1.00	2