



CYO Wall-mounted three-hole lavatory mixer without drain - Platinum / Brushed Platinum

36 707 811



- 6-1/4" Projection
 - Rigid spout
 - Rectangular aerated stream
 - Valve hole diameter 1-1/2"
 - Spout hole diameter 1-1/2"
 - Handle Ø 2-3/8"
 - Water flow rate limited to max. 1.2 gpm
 - lead-free
 - This product can help a building meet the requirements of Green Building Rating Systems, e.g. LEED®, BREEAM®, DGNB
- NOTE: Handle inserts are sold separately!**

NOTE: Handle inserts are sold separately!

	Platinum / Brushed Platinum	36 707 811-36
	Chrome	36 707 811-00
	Brushed Platinum	36 707 811-06
	Dark Chrome	36 707 811-19
	Brushed Durabronze (23kt Gold)	36 707 811-28
	Durabronze / Brushed Durabronze (23kt Gold)	36 707 811-38
	Brushed Dark Platinum	36 707 811-99

Required article



- Rough for wall-mounted faucet ,
spout in center -** 35 700 970-90
0010
- Max. rough in depth "
 - Min. rough in depth "

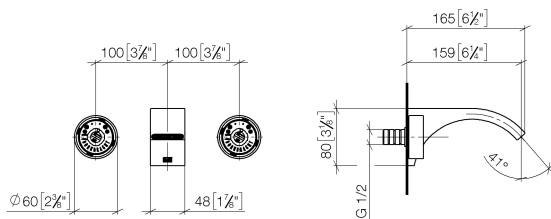
Required article



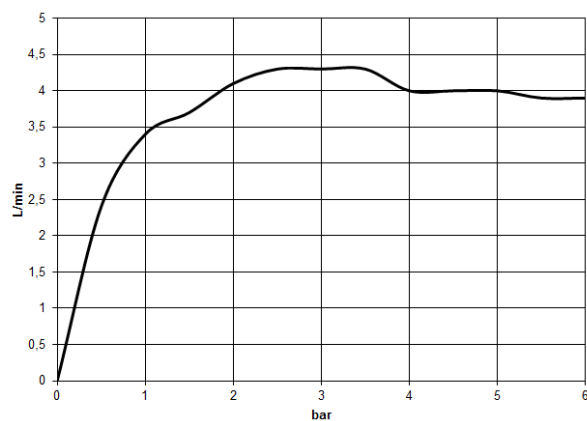
- Rough for wall-mounted faucet
flexible positioning -** 35 720 970-90
0010
- Max. rough in depth "
 - Min. rough in depth "

CYO Wall-mounted three-hole lavatory mixer without drain - Platinum / Brushed Platinum

36 707 811
mm [inches]



Flow rate chart



Codes & Standards

California Energy Commission (CEC)	DIN 4109	ISO 3822	NSF372
NSF61	Scottish Water Byelaws	UK Water Supply Regulations	Ü-Zeichen



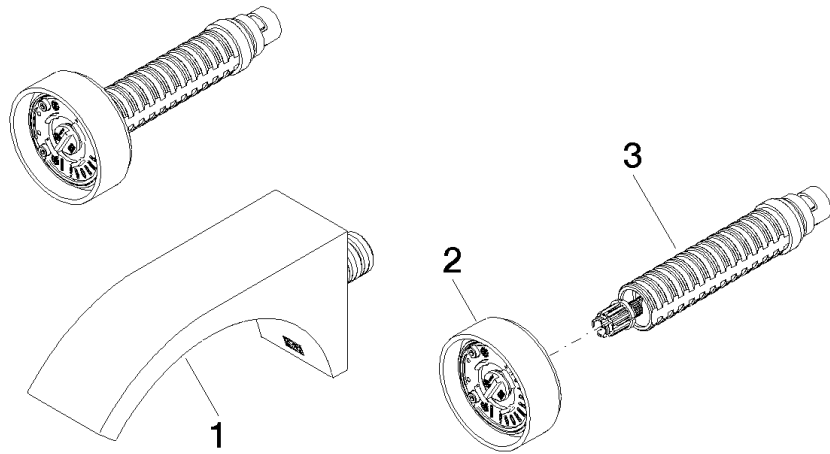
CYO Wall-mounted three-hole lavatory mixer without drain - Platinum / Brushed
Platinum

36 707 811
Certificates

WRAS_2111	IAPMO_N-4976	IAPMO_6397	LGA_38
-----------	--------------	------------	--------

CYO Wall-mounted three-hole lavatory mixer without drain - Platinum / Brushed Platinum

36 707 811



Spare parts list

Number	Item Number	Designation	Number of units	Lead time
1	13 800 811-36	CYO Lavatory spout, wall-mounted without drain - Platinum / Brushed Platinum	1	20
2	90 18 40 290 00-36	handle	1	20
3	90 90 03 171 01 90	top	1	2