



TARA Wall-mounted three-hole lavatory mixer without drain - Brushed Champagne (22kt Gold)

TARA

36 707 882    Product version from 4/1/2024



- 6-1/4" Projection
  - Rigid spout
  - Round aerated stream
  - Valve hole diameter 1-5/8"
  - Spout hole diameter 1-5/8"
  - Flange diameter 2-1/8"
  - Water flow rate limited to max. 1.2 gpm
  - lead-free
  - This product can help a building meet the requirements of Green Building Rating Systems, e.g. LEED®, BREEAM®, DGNB (ADA)
- (ADA)

	Brushed Champagne (22kt Gold)	36 707 882-46 0010
	Chrome	36 707 882-00 0010
	Brushed Platinum	36 707 882-06 0010
	Platinum	36 707 882-08 0010
	Dark Chrome	36 707 882-19 0010
	Brushed Durabronz (23kt Gold)	36 707 882-28 0010
	Matte Black	36 707 882-33 0010
	Brushed Dark Brass	36 707 882-39 0010
	Brushed Bronze	36 707 882-42 0010
	Champagne (22kt Gold)	36 707 882-47 0010
	Brushed Chrome	36 707 882-93 0010
	Brushed Dark Platinum	36 707 882-99 0010

Required article



- Rough for wall-mounted faucet , spout in center -**
- Max. rough in depth 5-3/4"
  - Min. rough in depth 3-3/8"
- 35 700 970-90 0010

Required article

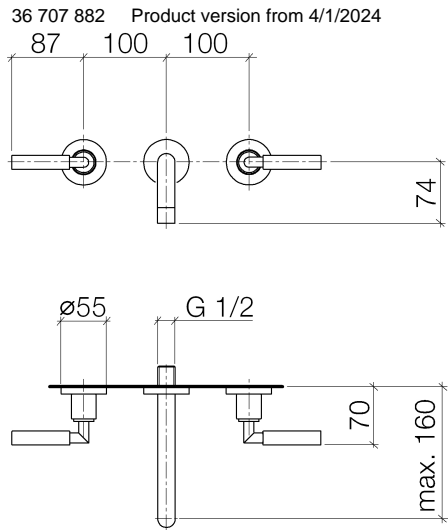


- Rough for wall-mounted faucet flexible positioning -**
- Max. rough in depth 5-3/4"
  - Min. rough in depth 3-3/8"
- 35 720 970-90 0010



TARA Wall-mounted three-hole lavatory mixer without drain - Brushed Champagne (22kt Gold)

TARA



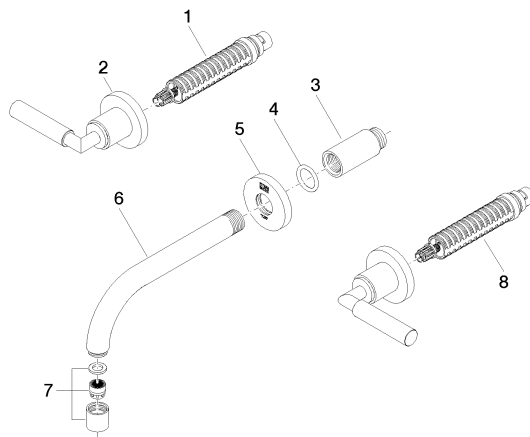
Codes & Standards			
ADA	ASME A112.18.1	California Energy Commission (CEC)	cUPC
EPA WaterSense	NSF372	NSF61	WaterSense

Certificates and sustainability			
IAPMO_N-4976	IAPMO_6397	IAPMO_4976 (	IAPMO_8834

## TARA Wall-mounted three-hole lavatory mixer without drain - Brushed Champagne (22kt Gold)

TARA

36 707 882 Product version from 4/1/2024



### Spare parts list

Number	Item Number	Designation	Number of units	Lead time
8	90 90 03 157 00 90	top	1.00	2
5	09 27 22 501-46	rosette	1.00	30
2	36 310 882-46	connection	2.00	-
Spare part can no longer be ordered, please order the replacement item				
1	90 90 03 156 00 90	top	1.00	2
3	09 24 03 081 10 90	extension	1.00	2
7	90 23 01 019 02-46	aerator	1.00	30
6	04 28 22 089 10-46	spout	1.00	30
4	90 14 10 026 00 90	seal	1.00	2