

IMO Wall-mounted three-hole lavatory mixer without drain - Chrome

IMO







36 712 671 Product version from 4/1/2024



- 6-3/4" Projection
- Rigid spout
- Rectangular aerated stream
- Valve hole diameter 1-5/8"
- Spout hole diameter 1-5/8"
- Individual flanges 2-3/8" x 2-3/8"
- Water flow rate limited to max. 1.2 gpm
- lead-free
- This product can help a building meet the requirements of Green Building Rating Systems, e.g. LEED®, BREEAM®, DGNB

(ADA)

(ADA)

	Chrome	36 712 671-00 0010
	Brushed Platinum	36 712 671-06 0010
	Dark Chrome	36 712 671-19 0010
	Brushed Light Gold	36 712 671-27 0010
	Matte Black	36 712 671-33 0010
	Brushed Chrome	36 712 671-93 0010
	Brushed Dark Platinum	36 712 671-99 0010

Required article



- Rough for wall-mounted faucet , spout in center -**

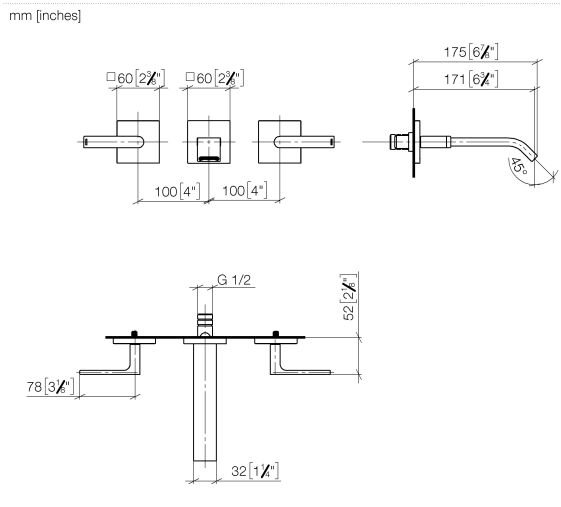
35 700 970-90 0010
- Min. rough in depth 4-3/8"
 - Max. rough in depth 5-7/8"

Required article



- Rough for wall-mounted faucet flexible positioning -**

35 720 970-90 0010
- Min. rough in depth 4-3/8"
 - Max. rough in depth 5-7/8"



Codes & Standards

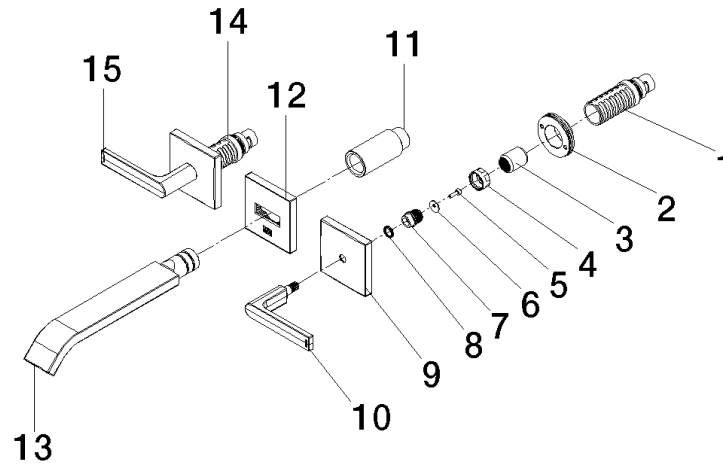
ADA ASME A112.18.1 cUPC EPA WaterSense

NSF372 NSF61 WaterSense



Certificates and sustainability

IAPMO_N-4976 IAPMO_6397 IAPMO_8834 IAPMO_4976 (



Spare parts list

Number	Item Number	Designation	Number of units	Lead time
	14 90 90 03 156 00 90	top	1.00	2
	15 90 20 67 026 00-00	handle (hot)	1.00	10
	4 09 23 30 074 90	nut	2.00	2
	9 09 27 78 033-00	rosette	2.00	10
	3 09 12 12 059 90	sleeve	2.00	2
	2 90 21 02 108 00 90	disc	2.00	2
	12 90 27 67 027 00-00	rosette	1.00	10
	10 90 20 67 025 00-00	handle (cold)	1.00	10
	5 09 30 30 167 90	screw	2.00	2
	7 09 12 12 057 90	fixing cap	2.00	2
	6 09 30 11 193 90	disc	2.00	2
	11 09 24 03 081 10 90	extension	1.00	2
	8 09 14 03 187 90	seal	2.00	2
	1 90 90 03 157 00 90	top	1.00	2
	13 90 28 22 413 00-00	spout	1.00	10