

IMO Wall-mounted three-hole lavatory mixer without drain - Brushed Light Gold







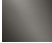
IMO

36 712 671 Product version from 4/1/2024



- 6-3/4" Projection
- Rigid spout
- Rectangular aerated stream
- Valve hole diameter 1-5/8"
- Spout hole diameter 1-5/8"
- Individual flanges 2-3/8" x 2-3/8"
- Water flow rate limited to max. 1.2 gpm
- lead-free
- This product can help a building meet the requirements of Green Building Rating Systems, e.g. LEED®, BREEAM®, DGNB **(ADA)**

(ADA)

	Brushed Light Gold	36 712 671-27 0010
	Chrome	36 712 671-00 0010
	Brushed Platinum	36 712 671-06 0010
	Dark Chrome	36 712 671-19 0010
	Matte Black	36 712 671-33 0010
	Brushed Chrome	36 712 671-93 0010
	Brushed Dark Platinum	36 712 671-99 0010

Required article



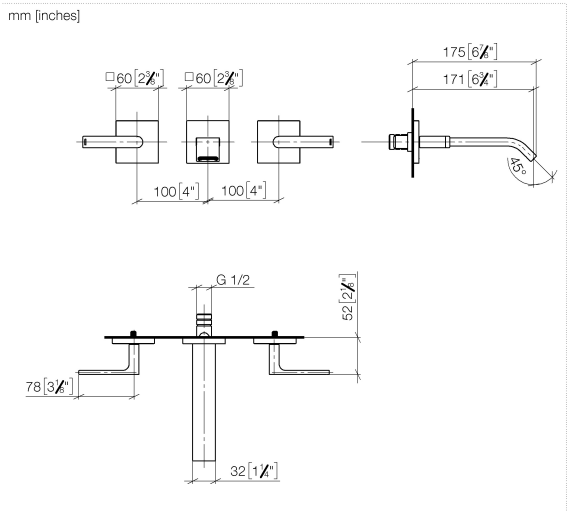
- Rough for wall-mounted faucet flexible positioning -** 35 720 970-90 0010
- Min. rough in depth 4-3/8"
 - Max. rough in depth 5-7/8"

Required article



- Rough for wall-mounted faucet , spout in center -** 35 700 970-90 0010
- Min. rough in depth 4-3/8"
 - Max. rough in depth 5-7/8"

36 712 671 Product version from 4/1/2024



Codes & Standards

ADA

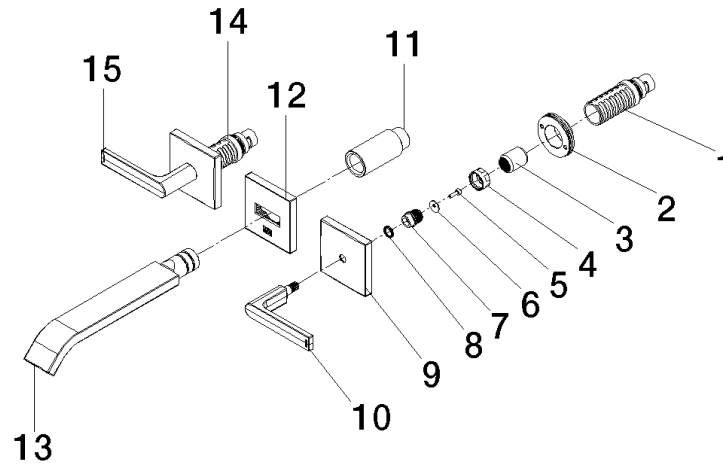
NSF372

NSF61

Certificates and sustainability

IAPMO_N-4976

IAPMO_6397



Spare parts list

Number	Item Number	Designation	Number of units	Lead time
8	09 14 03 187 90	seal	2.00	2
7	09 12 12 057 90	fixing cap	2.00	2
2	90 21 02 108 00 90	disc	2.00	2
4	09 23 30 074 90	nut	2.00	2
9	09 27 78 033-27	rosette	2.00	60
6	09 30 11 193 90	disc	2.00	2
15	90 20 67 026 00-27	handle (hot)	1.00	20
11	09 24 03 081 10 90	extension	1.00	2
5	09 30 30 167 90	screw	2.00	2
13	90 28 22 413 00-27	spout	1.00	20
12	90 27 67 027 00-27	rosette	1.00	20
1	90 90 03 157 00 90	top	1.00	2
3	09 12 12 059 90	sleeve	2.00	2
10	90 20 67 025 00-27	handle (cold)	1.00	20
14	90 90 03 156 00 90	top	1.00	2