

VAIA Wall-mounted three-hole lavatory mixer without drain - Platinum

VAIA

36 712 819 Product version from 3/13/2017



- 7-1/2" Projection
- Rigid spout
- Round aerated stream
- Valve hole diameter 1-1/2"
- Spout hole diameter 1-5/8"
- Flanges, diameter 2-3/8"
- Water flow rate limited to max. 1.2 gpm
- lead-free
- This product can help a building meet the requirements of Green Building Rating Systems, e.g. LEED®, BREEAM®, DGNB **(ADA)**

(ADA)

	Platinum	36 712 819-08 0010
	Chrome	36 712 819-00 0010
	Brushed Platinum	36 712 819-06 0010
	Dark Chrome	36 712 819-19 0010
	Brushed Durabrass (23kt Gold)	36 712 819-28 0010
	Brushed Dark Brass	36 712 819-39 0010
	Brushed Bronze	36 712 819-42 0010
	Brushed Champagne (22kt Gold)	36 712 819-46 0010
	Champagne (22kt Gold)	36 712 819-47 0010
	Brushed Dark Platinum	36 712 819-99 0010

Required article

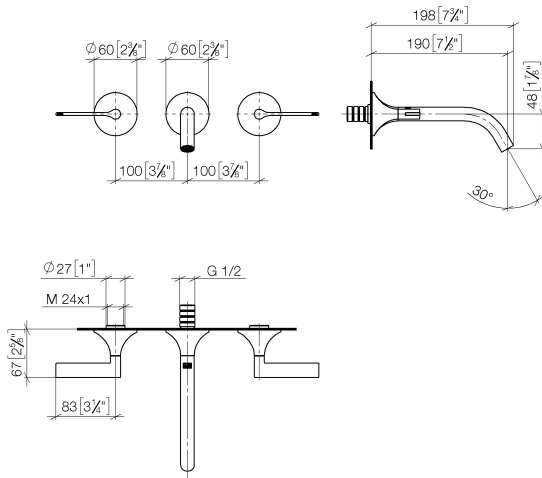


- Rough for wall-mounted faucet , spout in center -** 35 700 970-90 0010
- Max. rough in depth 5-3/4"
 - Min. rough in depth 3-3/8"

Required article



- Rough for wall-mounted faucet flexible positioning -** 35 720 970-90 0010
- Max. rough in depth 5-3/4"
 - Min. rough in depth 3-3/8"



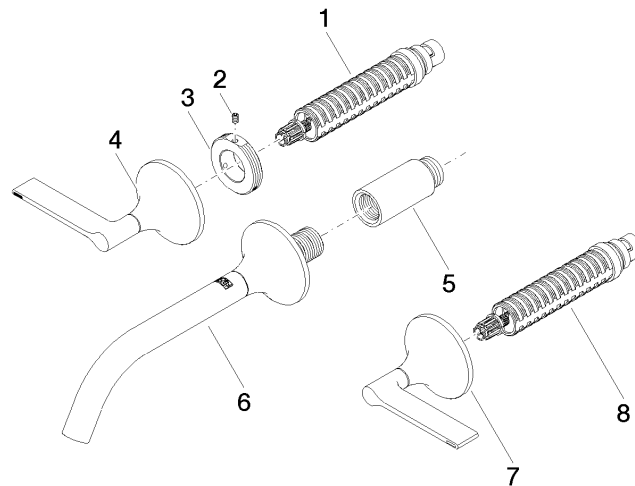
Codes & Standards

ADA	ASME A112.18.1	California Energy Commission (CEC)	cUPC
EPA WaterSense	NSF372	NSF61	WaterSense



Certificates and sustainability

IAPMO_N-4976	IAPMO_6397	IAPMO_4976 (IAPMO_8834
--------------	------------	--------------	------------



Spare parts list

Number	Item Number	Designation	Number of units	Lead time
1	90 90 03 157 00 90	top	1.00	2
8	90 90 03 156 00 90	top	1.00	2
4	90 20 80 013 00-08	handle (hot)	1.00	40
2	09 31 11 008 90	pin	2.00	2
3	09 21 02 163 90	disc	2.00	2
6	13 800 809-08 0010	VAIA Lavatory spout, wall-mounted without drain - Platinum	1.00	-
Spare part can no longer be ordered, please order the replacement item				
7	90 20 80 012 00-08	handle (cold)	1.00	40
5	09 24 03 081 10 90	extension	1.00	2