

TARA Wall-mounted three-hole lavatory mixer without drain - Brushed Platinum

TARA

36 712 882 Product version from 4/1/2024



- 7-1/2" Projection
- Round aerated stream
- Valve hole diameter 1-5/8"
- Spout hole diameter 1-5/8"
- Flange diameter 2-1/8"
- Water flow rate limited to max. 1.2 gpm
- lead-free
- This product can help a building meet the requirements of Green Building Rating Systems, e.g. LEED®, BREEAM®, DGNB

(ADA)

(ADA)

	Brushed Platinum	36 712 882-06 0010
	Chrome	36 712 882-00 0010
	Platinum	36 712 882-08 0010
	Dark Chrome	36 712 882-19 0010
	Brushed Durabrass (23kt Gold)	36 712 882-28 0010
	Matte Black	36 712 882-33 0010
	Brushed Dark Brass	36 712 882-39 0010
	Brushed Bronze	36 712 882-42 0010
	Brushed Champagne (22kt Gold)	36 712 882-46 0010
	Champagne (22kt Gold)	36 712 882-47 0010
	Brushed Chrome	36 712 882-93 0010
	Brushed Dark Platinum	36 712 882-99 0010

Required article



- Rough for wall-mounted faucet , spout in center -** 35 700 970-90 0010
- Max. rough in depth 5-3/4"
 - Min. rough in depth 3-3/8"

Required article



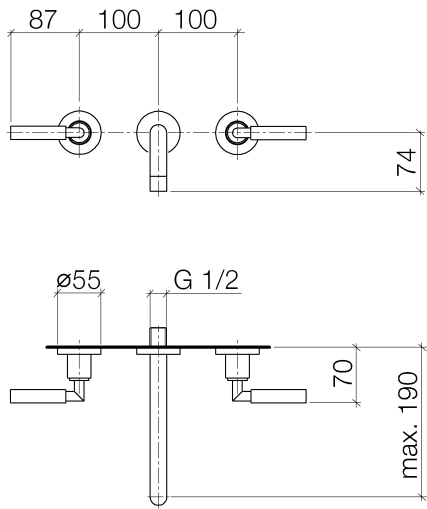
- Rough for wall-mounted faucet flexible positioning -** 35 720 970-90 0010
- Max. rough in depth 5-3/4"
 - Min. rough in depth 3-3/8"



TARA Wall-mounted three-hole lavatory mixer without drain - Brushed Platinum

TARA

36 712 882 Product version from 4/1/2024



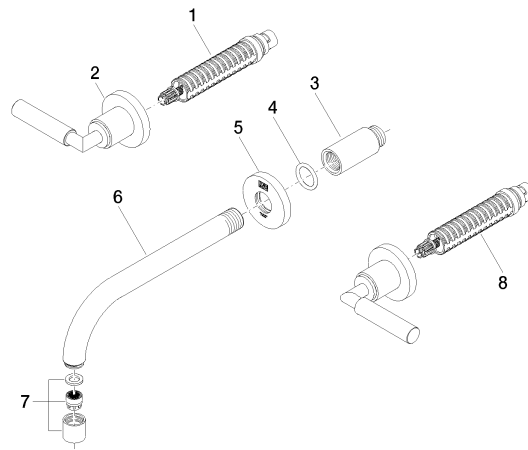
Codes & Standards

ADA	ASME A112.18.1	California Energy Commission (CEC)	cUPC
EPA WaterSense	NSF372	NSF61	WaterSense



Certificates and sustainability

IAPMO_N-4976	IAPMO_6397	IAPMO_4976 (IAPMO_8834
--------------	------------	--------------	------------



Spare parts list

Number	Item Number	Designation	Number of units	Lead time
8	90 90 03 157 00 90	top	1.00	2
1	90 90 03 156 00 90	top	1.00	2
2	36 310 882-06	connection	2.00	10
3	09 24 03 081 10 90	extension	1.00	2
5	09 27 22 501-06	rosette	1.00	10
6	04 28 22 090 10-06	spout	1.00	10
7	90 23 01 019 02-06	aerator	1.00	10
4	90 14 10 026 00 90	seal	1.00	2