


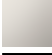
TARA Wall-mounted three-hole lavatory mixer without drain - Dark Chrome

36 717 882




- 9-1/2" Projection
- Rigid spout
- Round aerated stream
- Valve hole diameter 1-5/8"
- Spout hole diameter 1-5/8"
- Flange diameter 2-1/8"
- Water flow rate limited to max. 1.2 gpm
- lead-free
- This product can help a building meet the requirements of Green Building Rating Systems, e.g. LEED®, BREEAM®, DGNB **(ADA)**


(ADA)

	Dark Chrome	36 717 882-19 0010
	Chrome	36 717 882-00 0010
	Brushed Platinum	36 717 882-06 0010
	Platinum	36 717 882-08 0010
	Brushed Durabronze (23kt Gold)	36 717 882-28 0010
	Matte Black	36 717 882-33 0010
	Brushed Bronze	36 717 882-42 0010
	Brushed Champagne (22kt Gold)	36 717 882-46 0010
	Champagne (22kt Gold)	36 717 882-47 0010
	Brushed Chrome	36 717 882-93 0010
	Brushed Dark Platinum	36 717 882-99 0010

Required article

	<b>Rough for wall-mounted faucet , spout in center -</b> •Max. rough in depth " •Min. rough in depth "	35 700 970-90 0010
---	--	--------------------

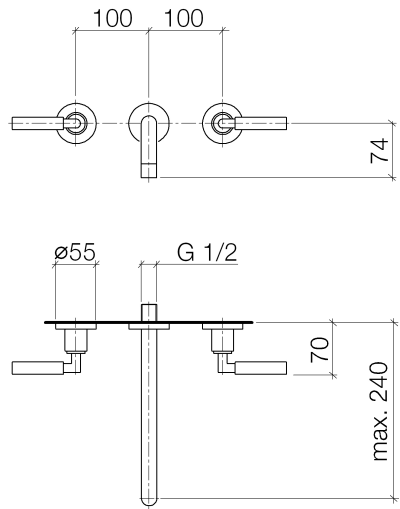
Required article

	<b>Rough for wall-mounted faucet flexible positioning -</b> •Max. rough in depth " •Min. rough in depth "	35 720 970-90 0010
---	---	--------------------



TARA Wall-mounted three-hole lavatory mixer without drain - Dark Chrome

36 717 882



Codes & Standards

ADA	ASME A112.18.1/CSA B125.1	California Energy Commission (CEC)	NSF/ANSI 372
NSF/ANSI/CAN 61	NSF61		

Certificates

IAPMO\_N-4976

## TARA Wall-mounted three-hole lavatory mixer without drain - Dark Chrome

36 717 882

