



TARA Wall-mounted three-hole lavatory mixer without drain - Brushed Dark Brass

TARA

36 717 882    Product version from 4/1/2024



- 9-1/2" Projection
  - Rigid spout
  - Round aerated stream
  - Valve hole diameter 1-5/8"
  - Spout hole diameter 1-5/8"
  - Flange diameter 2-1/8"
  - Water flow rate limited to max. 1.2 gpm
  - lead-free
  - This product can help a building meet the requirements of Green Building Rating Systems, e.g. LEED®, BREEAM®, DGNB
- (ADA)

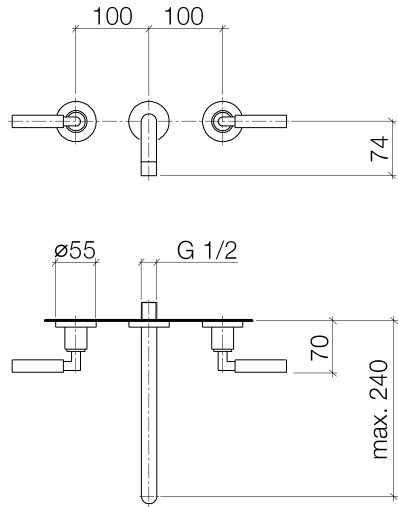
	Brushed Dark Brass	36 717 882-39 0010
	Chrome	36 717 882-00 0010
	Brushed Platinum	36 717 882-06 0010
	Platinum	36 717 882-08 0010
	Dark Chrome	36 717 882-19 0010
	Brushed Durabronze (23kt Gold)	36 717 882-28 0010
	Matte Black	36 717 882-33 0010
	Brushed Bronze	36 717 882-42 0010
	Brushed Champagne (22kt Gold)	36 717 882-46 0010
	Champagne (22kt Gold)	36 717 882-47 0010
	Brushed Chrome	36 717 882-93 0010
	Brushed Dark Platinum	36 717 882-99 0010



TARA Wall-mounted three-hole lavatory mixer without drain - Brushed Dark Brass

TARA

36 717 882 Product version from 4/1/2024



Codes & Standards

ADA	California Energy Commission (CEC)	NSF61
-----	------------------------------------	-------

Certificates and sustainability

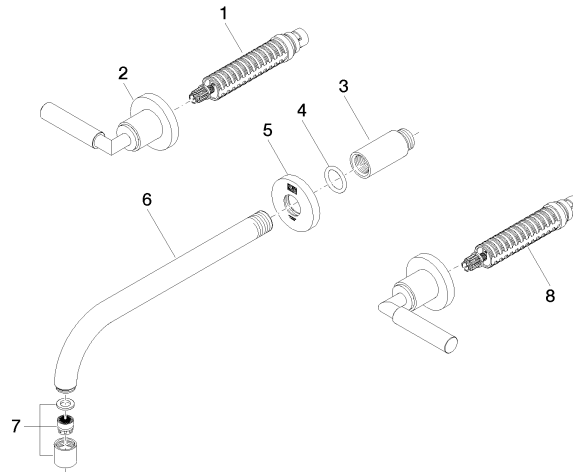
IAPMO\_N-4976

## TARA Wall-mounted three-hole lavatory mixer without drain - Brushed Dark Brass

TARA

36 717 882 Product version from 4/1/2024

Parts for other  
finishes can be found  
here: [Chrome](#)



### Spare parts list

Number	Item Number	Designation	Number of units	Lead time
5	09 27 22 501-39	rosette	1.00	60
7	90 23 01 019 02-39	aerator	1.00	30
2	36 310 882-39	TARA Volume Control - Brushed Dark Brass	1.00	30
3	09 24 03 081 10 90	extension	1.00	2
6	04 28 22 105 10-39	spout	1.00	60
1	90 90 03 156 00 90	top	1.00	2
4	90 14 10 026 00 90	seal	1.00	2
8	90 90 03 157 00 90	top	1.00	2