



TARA Wall-mounted three-hole lavatory mixer without drain - Brushed Bronze

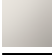
TARA

36 717 882 Product version from 4/1/2024



- 9-1/2" Projection
- Rigid spout
- Round aerated stream
- Valve hole diameter 1-5/8"
- Spout hole diameter 1-5/8"
- Flange diameter 2-1/8"
- Water flow rate limited to max. 1.2 gpm
- lead-free
- This product can help a building meet the requirements of Green Building Rating Systems, e.g. LEED®, BREEAM®, DGNB

(ADA)

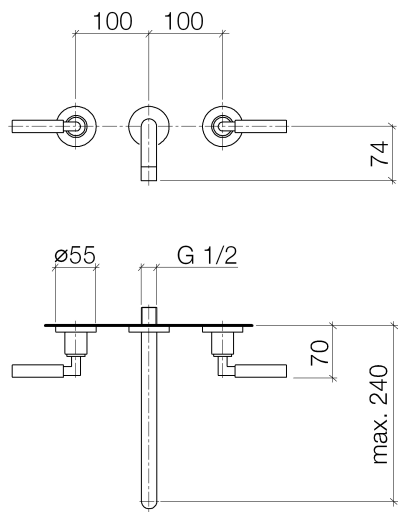
| | | |
|-------------------------------------------------------------------------------------|-------------------------------|--------------------|
|  | Brushed Bronze | 36 717 882-42 0010 |
|  | Chrome | 36 717 882-00 0010 |
|  | Brushed Platinum | 36 717 882-06 0010 |
|  | Platinum | 36 717 882-08 0010 |
|  | Dark Chrome | 36 717 882-19 0010 |
|  | Brushed Durabrass (23kt Gold) | 36 717 882-28 0010 |
|  | Matte Black | 36 717 882-33 0010 |
|  | Brushed Champagne (22kt Gold) | 36 717 882-46 0010 |
|  | Champagne (22kt Gold) | 36 717 882-47 0010 |
|  | Brushed Chrome | 36 717 882-93 0010 |
|  | Brushed Dark Platinum | 36 717 882-99 0010 |



TARA Wall-mounted three-hole lavatory mixer without drain - Brushed Bronze

TARA

36 717 882 Product version from 4/1/2024



Codes & Standards

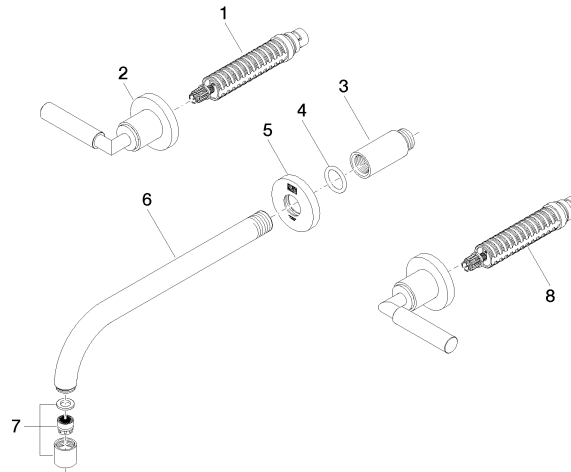
| | | |
|-----|------------------------------------|-------|
| ADA | California Energy Commission (CEC) | NSF61 |
|-----|------------------------------------|-------|

Certificates and sustainability

IAPMO_N-4976

36 717 882 Product version from 4/1/2024

Parts for other
finishes can be found
here: [Chrome](#)



Spare parts list

| Number | Item Number | Designation | Number of units | Lead time |
|--------|--------------------|-------------|-----------------|-----------|
| 8 | 90 90 03 157 00 90 | top | 1.00 | 2 |
| 6 | 04 28 22 105 10-42 | spout | 1.00 | 60 |
| 3 | 09 24 03 081 10 90 | extension | 1.00 | 2 |
| 1 | 90 90 03 156 00 90 | top | 1.00 | 2 |
| 7 | 90 23 01 019 02-42 | aerator | 1.00 | 30 |
| 5 | 09 27 22 501-42 | rosette | 1.00 | 60 |
| 4 | 90 14 10 026 00 90 | seal | 1.00 | 2 |
| 2 | 36 310 882-42 | connection | 1.00 | 30 |