



TARA Wall-mounted three-hole lavatory mixer without drain - Brushed Champagne (22kt Gold)

TARA

36 717 892 Product version from 4/1/2024



- 9-1/2" Projection
 - Rigid spout
 - Round aerated stream
 - Valve hole diameter 1-5/8"
 - Spout hole diameter 1-5/8"
 - Flange diameter 2-1/8"
 - Water flow rate limited to max. 1.2 gpm
 - lead-free
 - This product can help a building meet the requirements of Green Building Rating Systems, e.g. LEED®, BREEAM®, DGNB
- (ADA)**

(ADA)

	Brushed Champagne (22kt Gold)	36 717 892-46 0010
	Chrome	36 717 892-00 0010
	Brushed Platinum	36 717 892-06 0010
	Platinum	36 717 892-08 0010
	Dark Chrome	36 717 892-19 0010
	Brushed Durabrass (23kt Gold)	36 717 892-28 0010
	Matte Black	36 717 892-33 0010
	Brushed Bronze	36 717 892-42 0010
	Champagne (22kt Gold)	36 717 892-47 0010
	Brushed Chrome	36 717 892-93 0010
	Brushed Dark Platinum	36 717 892-99 0010

Required article



- Rough for wall-mounted faucet , spout in center -**
- 35 700 970-90 0010
- Max. rough in depth 5-3/4"
 - Min. rough in depth 3-3/8"

Required article



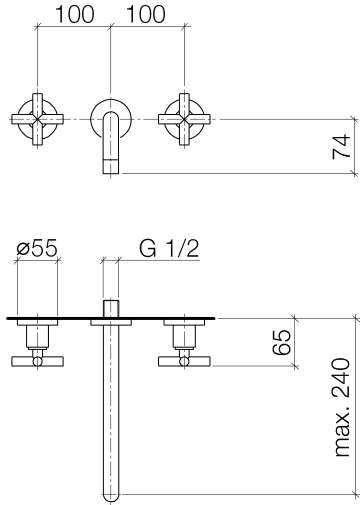
- Rough for wall-mounted faucet flexible positioning -**
- 35 720 970-90 0010
- Max. rough in depth 5-3/4"
 - Min. rough in depth 3-3/8"



TARA Wall-mounted three-hole lavatory mixer without drain - Brushed Champagne (22kt Gold)


TARA

36 717 892 Product version from 4/1/2024



Codes & Standards

ADA	ASME A112.18.1	California Energy Commission (CEC)	cUPC
EPA WaterSense	NSF372	NSF61	WaterSense



WaterSense
Meets EPA Criteria
Certified by IAPMO TEST

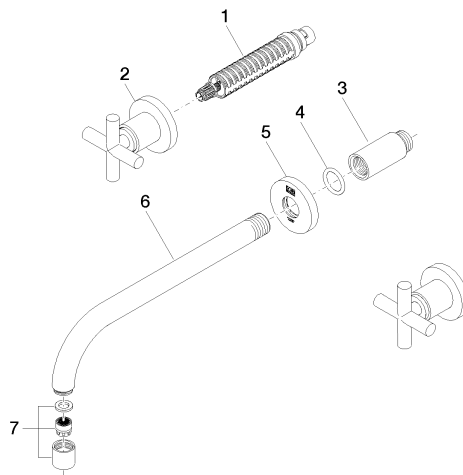
Certificates and sustainability

IAPMO_N-4976	IAPMO_6397	IAPMO_4976 (IAPMO_8834
--------------	------------	--------------	------------

TARA Wall-mounted three-hole lavatory mixer without drain - Brushed Champagne (22kt Gold)

TARA

36 717 892 Product version from 4/1/2024



Spare parts list

Number	Item Number	Designation	Number of units	Lead time
3	09 24 03 081 10 90	extension	1.00	2
7	90 23 01 019 02-46	aerator	1.00	30
1	90 90 03 157 00 90	top	2.00	2
2	36 310 892-46	TARA Volume Control - Brushed Champagne (22kt Gold)	2.00	30
6	04 28 22 105 10-46	spout	1.00	30
5	09 27 22 501-46	rosette	1.00	30
4	90 14 10 026 00 90	seal	1.00	2