



## META Wall-mounted single-lever mixer without drain - Brushed Chrome

---

36 804 661 Product version from 4/2/2020



- 6-1/4" Projection
- Rigid spout
- Round aerated stream
- 2-3/8" hole diameter
- Flange diameter 3-1/8"
- Water flow rate limited to max. 1.2 gpm
- lead-free
- Single hole wall mounting
- This product can help a building meet the requirements of Green Building Rating Systems, e.g. LEED®, BREEAM®, DGNB

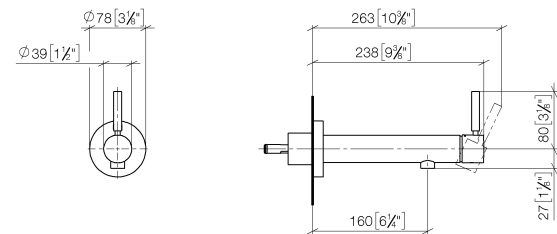
(ADA)



META Wall-mounted single-lever mixer without drain - Brushed Chrome

36 804 661    Product version from 4/2/2020

mm [inches]



Codes & Standards

ADA	ASME A112.18.1	ASME A112.18.1/CSA B125.1	California Energy Commission (CEC)
cUPC	EPA WaterSense	NSF/ANSI 372	NSF/ANSI/CAN 61
NSF372	NSF61	Water Sense	WaterSense

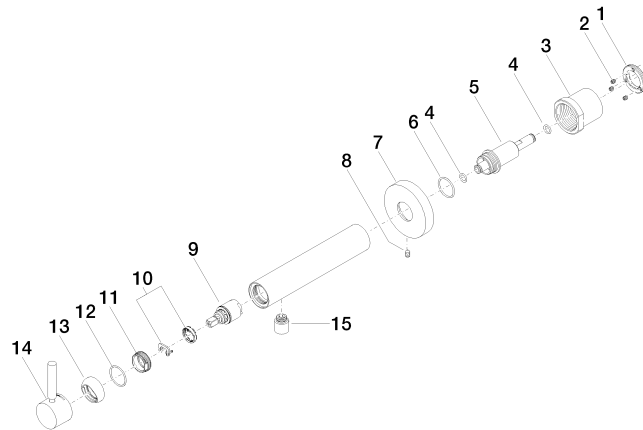


Certificates

IAPMO_N-4976	IAPMO_6397	IAPMO_8834	IAPMO_4976 (
--------------	------------	------------	--------------

## META Wall-mounted single-lever mixer without drain - Brushed Chrome

36 804 661 Product version from 4/2/2020



### Spare parts list

Number	Item Number	Designation	Number of units	Lead time
1	09 24 77 002 90	nut	1	2
2	90 31 11 030 00 90	pin	3	2
3	09 21 02 128 90	sleeve	1	2
4	09 14 10 139 90	seal	2	2
5	09 24 04 210 10 90	nipple	1	2
6	90 14 10 063 00 90	seal	1	2
7	09 27 88 009-93	rosette	1	20
8	09 31 11 144 90	pin	1	2
9	90 15 05 044 00 90	cartridge	1	2
10	90 28 10 148 00 90	accessories	1	2
11	09 24 04 266 90	nut	1	2
12	09 14 10 120 90	seal	1	2
13	09 28 30 043-93	cover	1	20
14	90 20 66 024 00-93	handle	1	20
15	90 23 01 168 01-93	aerator	1	-

Spare part can no longer be ordered, please order the replacement item