



META Wall-mounted single-lever mixer without drain - Brushed Chrome

36 860 660    Product version from 7/1/2023



- 7-1/2" Projection
- Rigid spout
- Round aerated stream
- Spout hole diameter 1-1/2"
- Hole diameter single-lever mixer 2-1/4"
- 2-1/8" diameter flange for spout
- Diameter flange for mixer 3-1/8"
- Water flow rate limited to max. 1.2 gpm
- lead-free
- This product can help a building meet the requirements of Green Building Rating Systems, e.g. LEED®, BREEAM®, DGNB

(ADA)

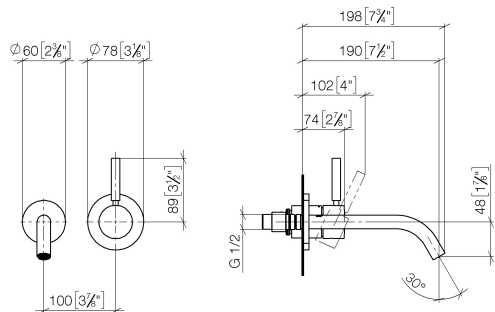
	Brushed Chrome	36 860 660-93 0010
	Chrome	36 860 660-00 0010
	Brushed Platinum	36 860 660-06 0010
	Dark Chrome	36 860 660-19 0010
	Light gold	36 860 660-26 0010
	Brushed Light Gold	36 860 660-27 0010
	Matte Black	36 860 660-33 0010
	Brushed Bronze	36 860 660-42 0010
	Brushed Champagne (22kt Gold)	36 860 660-46 0010
	Champagne (22kt Gold)	36 860 660-47 0010
	Brushed Dark Platinum	36 860 660-99 0010



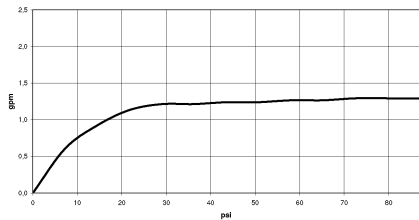
META Wall-mounted single-lever mixer without drain - Brushed Chrome

36 860 660    Product version from 7/1/2023

mm [inches]



Flow rate chart



Codes & Standards

ADA	ASME A112.18.1	ASME A112.18.1/CSA B125.1	California Energy Commission (CEC)
cUPC	EPA WaterSense	NSF/ANSI 372	NSF/ANSI/CAN 61
NSF372	NSF61	Water Sense	WaterSense





META Wall-mounted single-lever mixer without drain - Brushed Chrome

---

36 860 660 Product version from 7/1/2023

Certificates

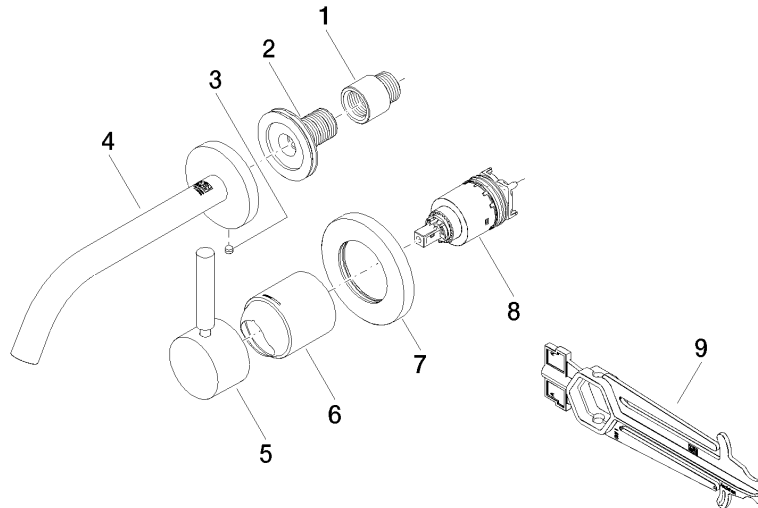
---

IAPMO\_N-4976      IAPMO\_6397      IAPMO\_8834      IAPMO\_4976 (

## META Wall-mounted single-lever mixer without drain - Brushed Chrome

36 860 660 Product version from 7/1/2023

Parts for other  
finishes can be found  
here: [Chrome](#)



### Spare parts list

Number	Item Number	Designation	Number of units	Lead time
1	09 24 03 072 10 90	nipple	1	2
2	90 24 03 280 00 90	nipple	1	2
3	09 31 11 112 90	pin	1	60
4	90 28 22 323 01-93	spout	1	20
5	90 20 66 007 00-93	handle	1	20
6	09 11 02 288-93	cover	1	20
7	90 27 62 011 00-93	rosette	1	20
8	90 15 05 064 01 90	cartridge	1	2
9	90 30 09 064 00 90	key	1	2